

2015-16 ANNUAL REPORT

GREAT THINGS HAPPENED BECAUSE WE CHOSE TO LIVE UNITED!

IN THIS ISSUE

Staff and Loaned Executives.....	2
Highlights of How We Live United....	3-4
2015-16 Financials.....	5
Our Work in Education.....	6-9
Our Work in Health.....	10-13
Our Work in Financial Stability...	14-17
2015 Community Partnerships.....	18
Programs and Initiatives.....	19-20
2-1-1.....	21
Honorees.....	22
Board of Directors.....	23
Key Volunteer Leadership.....	24
Non-Profit Training Series.....	25
Loaned Executive Program.....	26
Emerging Leaders Society.....	27
Workplace Giving.....	28
Women Leadership Council.....	29
Tocqueville/Agnes Weis Society....	30
Red Feather Fellowship.....	31-32
Diamond Donors.....	33
In-Kind Giving/SBC.....	34
Volunteers.....	35-38
Pledge Form.....	40
Sponsors.....	42



MISSION:

Uniting our community and leveraging resources to improve lives.

In Action: 8,027 donors and 3,637 volunteers leveraged \$3.8M in cash and in-kind donations to create a \$15.8M return on the investment as seen in community impact.

VISION:

A community united to create better opportunities for all.

In Action: Launched AmeriCorps VISTA Aligns program to host an eventual 25 VISTAs building capacity in local nonprofit organizations that serve our community.

VALUES:

INTEGRITY

Demonstrates exceptional impartiality and consistency and communicates with total transparency.

In Action: One of only 8 local charities fully accredited as meeting all nonprofit standards monitored by the Better Business Bureau.

LEADERSHIP

Exemplifies the highest standards of non-profit management.

In Action: Nonprofit Training was attended by 70 nonprofit professionals from 26 organizations that benefited from the trainers who shared their expertise.

INCLUSIVENESS

Seeks input from non-profit agencies, partners, donors and citizens so that we may be respectful, responsive and supportive in building better relationships.

In Action: Six new programs received funding and five were programs from newly certified partners.

VOLUNTEERISM

Sets the standard as the best example of an organization that is collaborative, respectful and supportive of volunteers.

In Action: We saw a 36% increase in volunteers who gave 12,935 more hours than the prior year.

EXCELLENCE

Exceeds all standards while maintaining a focus and understanding of our role to build a better community.

In Action: Nonprofit expertise was seen as exemplary by state, national and international visitors who came to our local United Way to observe best practices.



A MESSAGE FROM ANDREA KRIEGER

Great things happened because we chose to LIVE UNITED. More than a brand statement...this line is more powerful because of the local investment each partner and citizen made when they chose to care about someone else. Our 2015-2016 year was successful and busy. For every dollar donated, we were able to leverage relationships

and resources to create a \$4.78 positive impact on our community. It proved that working together is the best way to solve old problems with new solutions. More importantly, it reminded us that each of us is just trying to be happy and do our best for our families and each other.

For a relatively small United Way, we are powerful because of the committed partners who work together to improve lives in our community. Together, we supported our community and local partners with a \$1,970,567 investment in local agencies and programs. Another \$747,674 was invested to help support volunteerism, educational resources and alignment, health referrals and financial stability initiatives and outcomes. You may be more familiar with the programs offered with this \$747,674 investment. They included Cram the Van, ReadingPals, Achieve Escambia, Communities Caring at Christmas, Christmas Wishes, RSVP, nonprofit training, Day of Caring, VITA free tax assistance programs, the Emergency Food and Shelter Program and 2-1-1. In total, because we joined forces to solve problems, there was a \$7.4 million impact created by these programs alone...a \$10 impact for every \$1 invested.

Our Board of Directors was actively engaged in leading these efforts and are proud of the over \$14.8 million impact that we were able to return to our community in the last year. It is a privilege to have the support of these dedicated community leaders and I encourage you to read Chairman Peaden's thoughts later in this report. It was a challenging year, but our leadership stepped up to ensure that we could best support the community by successfully raising and investing \$487,325 to complete long-term recovery efforts associated with 2014 flooding and then to face historic weather events in February. They were tireless in their efforts to raise funds and awareness as they traveled across the community to discover how we could best work together to recover from the two EF3 tornadoes that devastated local families.

We are honored to work with our partners to leverage local resources that can solve community problems.

Andrea Krieger

2016-2017 STAFF

- | | |
|------------------|--|
| Sarah Andrews | 2-1-1 I&R Specialist |
| Barbara Bailey | 2-1-1 I&R and Resource Specialist |
| Amanda Crabtree | 2-1-1 Director |
| Sarah Green | National Service Manager |
| Laura Hill | Vice President |
| Tom Hilton | Chief Financial Officer |
| Carlee Hoffmann | Community Engagement Director |
| Kelly Jasen | Campaign Manager |
| Naomi Kjer | Marketing Manager |
| Andrea Krieger | President/CEO |
| Melissa Lewis | Director of HR/Administration |
| Kelly Litster | Partnership Manager |
| Mike Martin | 2-1-1 Contact Center Manager |
| William Nahrgang | Facilities Manager |
| Savanna Penland | 2-1-1 Resource Manager |
| Bridget Robinson | Americorps VISTA Leader |
| Sarah St. Ores | ReadingPals Coordinator |
| James Sutton | Staff Accountant |
| Mary Wilson | Administrative Assistant |
| Will Wirth | RSVP--Retired Senior Volunteer Program Manager |



2016-2017 LOANED EXECUTIVE STAFF

- | | |
|---------------------|---|
| Karen Barbee | Council on Aging of West Florida |
| Detriz Bowers | AMIkids Pensacola |
| Megan Chapman | Gulf Coast Kid's House |
| Karen Columbus | Gulf Power Company |
| Viki Estepa | Publix Supermarket #1296 |
| Jason Flory | Gulf Power Company |
| William Freeman | Escambia Boys Base |
| Kay Hill | Gulf Power Company |
| Leslie Hunter-Huff | Boys & Girls Clubs of the Emerald Coast |
| Sonja Johnson | Gulf Power Company |
| Katie Kingsman | Edward Jones |
| Michele Kors | Gulf Winds Federal Credit Union |
| James Lay | Gulf Power Company |
| Kristi Mitchell | Gulf Power Company |
| Rebecca Stauffacher | Greater Pensacola Chamber of Commerce |
| Holly Stratton | Early Learning Coalition |

HIGHLIGHTS OF HO



WE LIVE UNITED

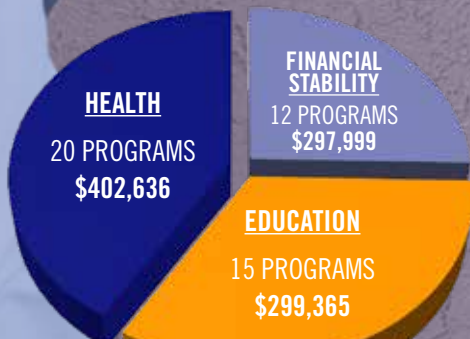
GIVE In 2016, \$3,803,813 in public support were leveraged to create a \$10,924,704 impact. Additionally, nonprofit partners and disaster efforts were able to draw \$3,655,713 in matching dollars. The return on investment for the 2015-16 year was \$14,845,294! In effect, more than 190,000 local men, women, and children were assisted because United Way was here to fund local programs and leverage community resources to benefit Escambia County citizens.

ADVOCATE Advocate for those in need by growing your knowledge of current issues impacting our community through our eNewsletter. Additionally, engage with our Facebook and Twitter pages to share the success you help create! Or, tell your neighbors and friends about 2-1-1. Information and Referral Specialists answer calls 24 hours a day, 7 days a week in their efforts to advocate on behalf of those in need. In our 2015-16 year, specialists referred citizens to 54,710 local resources!

VOLUNTEER We could not do this work without volunteers who help us serve the community. 3,637 volunteers gave 41,738 hours in service to others. The Independent Sector values their gift of time at the rate of \$23.56 an hour. In effect, volunteers gave a generous \$962,884 by donating their talent and time to the community. They served through initiatives like Day of Caring, Free Tax Assistance Programs, Retired Senior Volunteer Program (RSVP), Cram the Van and ReadingPals.

LIVE UNITED!

In the 2015-16 year, we continued our Non-Profit Training Series and provided partners with educational opportunities on Mission Based Management, Volunteer Management, Effective Meetings, Marketing to Create a Positive Brand and Grant Writing. Seventy nonprofit professionals attended nonprofit training in the last fiscal year. At the end of the trainings, pre and post-test averages demonstrated a 24% gain in knowledge and in attendees comfort level with the subject area and knowledge of where to find resources to further help their organizations. Other significant efforts to affect community change included our support of local families impacted by 2014 floods and two EF3 tornados that devastated our community in February of this year. Focus groups including 26 non-profit partners and 13 business partners met quarterly to provide input on progress toward community goals to objectively measure shared commitments to community-wide change.



COMMUNITY INVESTMENT AWARDS = \$1 MILLION

DONOR DESIGNATIONS	FLOOD SUPPORT	TORNADO RESPONSE	OTHER INITIATIVES
152 Agencies	3 Partners	9 Agencies	22 Agencies
\$417,838	\$243,299	\$382,246	\$221,327
OTHER AWARDS AND ALLOCATIONS = \$1,264,710			

2015-16 FINANCIALS

Year ended June 30, 2016 (unaudited)

PUBLIC SUPPORT & REVENUES

Gross Campaign Results	\$2,050,026
Less Provision for Uncollectibles	(\$127,780)
Net Campaign Revenue	\$1,922,246
In Kind Contributions	\$483,462
Contributions from Outside Service Area	\$21,554
Grants, Contracts, Program Revenues	\$1,321,640
Investment Income (Loss)	(\$10,369)
Other Income	\$65,280
Total Public Support and Revenues	\$3,803,813

EXPENSES

Program Services	
Gross Funds Awarded	\$1,938,790
Community Investment	\$204,601
211 NW Florida	\$411,991
Volunteer Services	\$83,634
Impact Initiatives	
Flood Relief, Tornado Relief, Other	\$332,969
Financial Literacy	\$78,266
Early Learning	\$60,153
Total Program Services	\$1,171,613
Supporting Services	
Fundraising	\$301,924
Organizational Administration	\$422,388
Total Supporting Services	\$724,312
Total Expenses	\$3,834,715
Decrease in Net Assets	(\$30,902)
Net Assets at Beginning of Year	\$2,200,494
Net Assets at End of Year	\$2,169,592

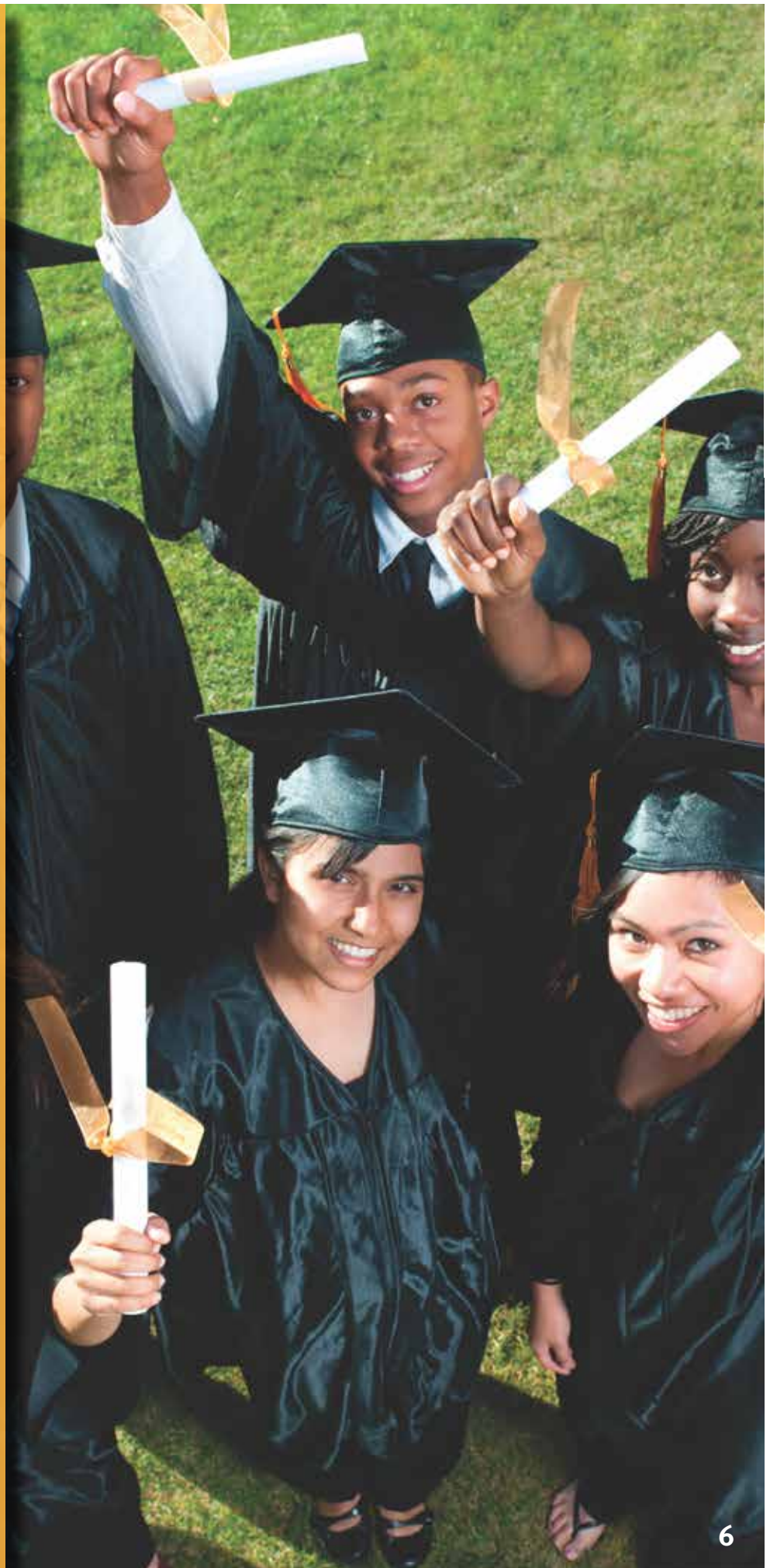
LIVE UNITED

OUR WORK IN EDUCATION

Our education collaborative works to create **READINESS FOR SUCCESS** to ensure children grow into successful and productive adults. We focus on cradle to career success.

United Way and partners commit to community-wide goals and strive for a 1% annual increase in student school readiness, on-time graduation, report card averages, attendance averages, grade level reading proficiency, scholarships, internships and employment obtained.

**EVERY \$1 INVESTED EQUALS
\$2.10 RETURN ON INVESTMENT**



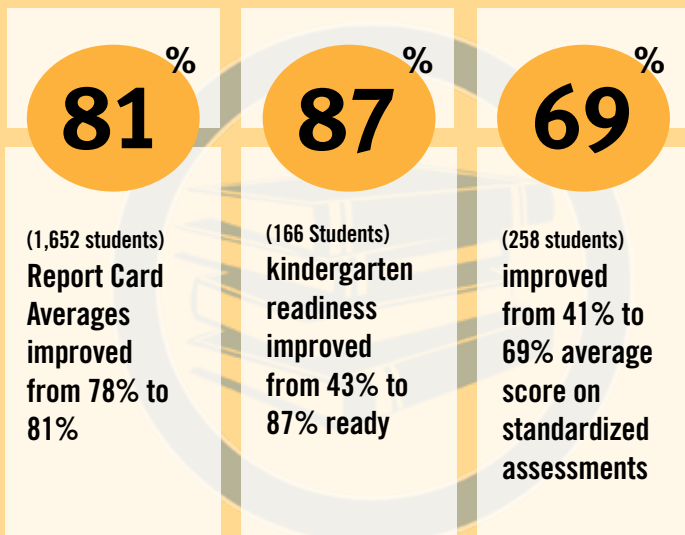
RAISING PARTNER SUCCESS IN EDUCATION

Our Future Together:

What will our community look like if we fully succeed in reaching our goals? We believe our community will thrive if our children are ready for success every step of the way. Like community partners in Achieve Escambia, we believe:

- That every child is capable of learning and deserves the opportunity to succeed;
- That education is the most effective ladder to realizing one's full potential;
- That the promise of our children and generations to come is a resource which we cannot afford to waste; and
- That together, through shared and aligned efforts, we can and will create a community where every generation achieves success – cradle to career.

What success looks like for the 6,267 served...





Join the Movement

February through May help decide where funds can do the most good as a **Community Investment Education Panelist**.

November 15 sponsor or attend the **Education Summit**.

June through August collect school supplies and help **Cram the Van**.

August through May read to a 4 year old as a **ReadingPal**.

October 14 volunteer or host a one day project as part of **Day of Caring**.

Monthly, share your strength by joining the **Women's Leadership Council**.

Yearly, lead with your experience by joining **RSVP**.

For more information, call United Way at 850-434-3157.

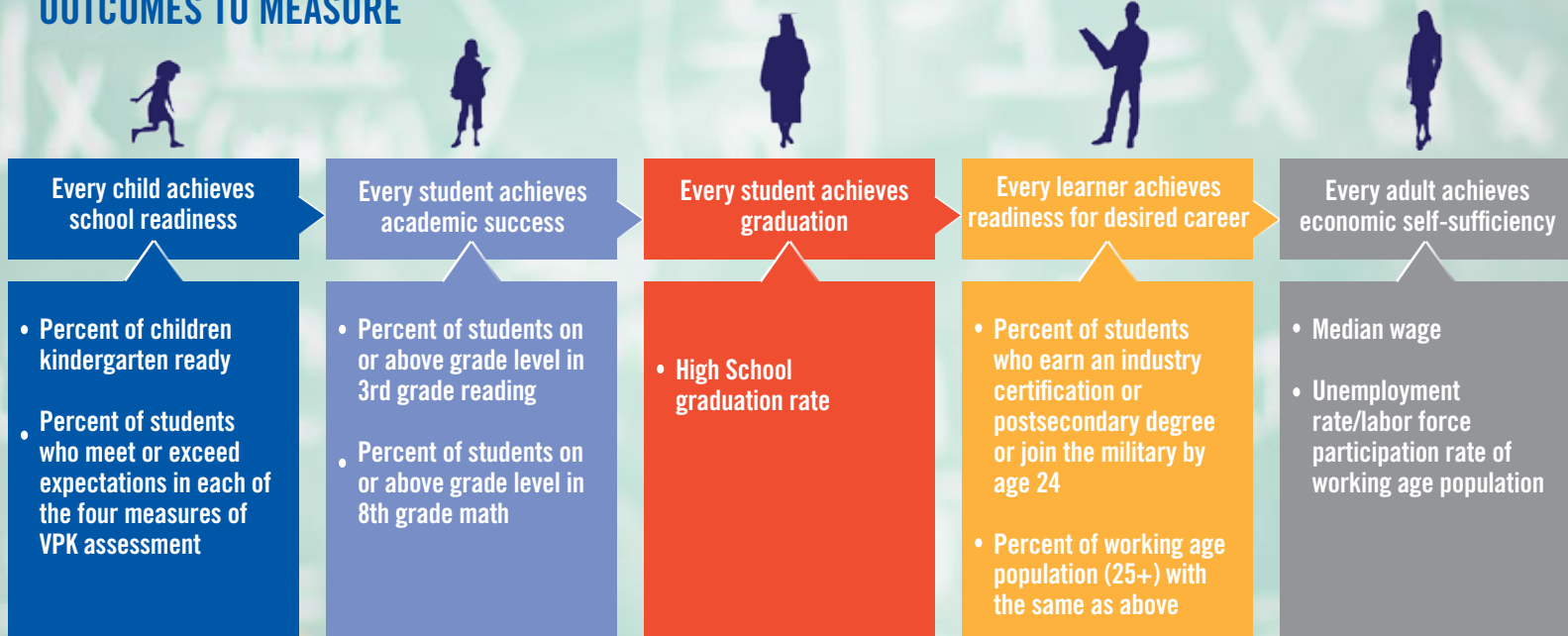
COMMUNITY ISSUES AND HOW WE LIVE UNITED

Our community faces numerous challenges concerning education. 34% of Escambia County children fail kindergarten readiness tests. Kindergarten readiness directly affects our high school graduation rate at 72.7%. Later in life, 63% of our working-age population has a high school diploma or less as their highest educational attainment. Achieve Escambia is an example of coordinated vision and action among those working collectively to solve these problems.

Achieve Escambia is an “all-in” partnership of Escambia County leaders and stakeholders in education, nonprofit, business, faith, community, civic and philanthropic sectors committed to align our community resources so everyone is empowered to achieve success. The partnership shares a vision and strategy for improving cradle to career outcomes through a structured, evidence-based, long-term approach.

Using research-based outcomes, contributing and contextual indicators, Achieve Escambia will track annual achievement data both county-wide and disaggregated for each of several critical cradle to career stages: kindergarten readiness, academic success, high school graduation, readiness for desired career, and economic self-sufficiency. For more information, call 434-3157.

OUTCOMES TO MEASURE



OUR WORK IN HEALTH

Our health collaborative works to create HEALTHY INDEPENDENT CITIZENS through better behaviors and access to resources that maintain or improve independence.

United Way and partners are committed to community-wide goals and strive for an annual 1% increase in independence that results from a 1% decrease in obesity and unhealthy behaviors such as physical or substance abuse. Partners measure their ability to help youth and adults be healthier by measuring avoidance of risky behavior and the consistency of prevention and healthy choices.

**EVERY \$1 INVESTED EQUALS
\$3.76 RETURN ON INVESTMENT**



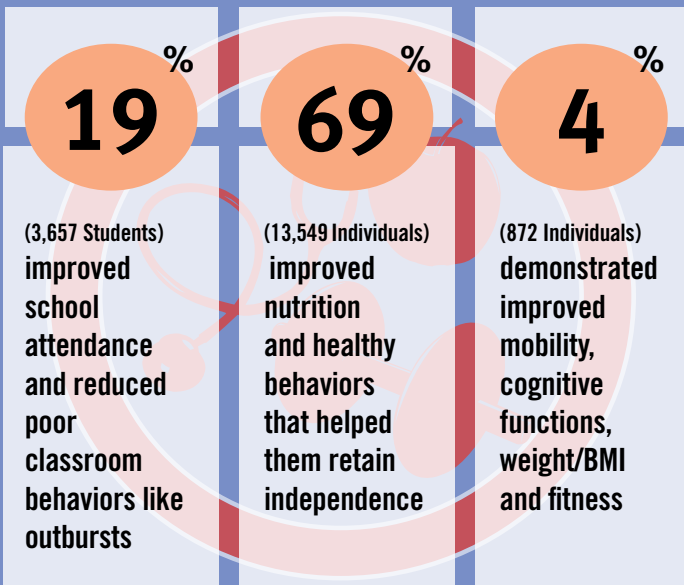
RAISING PARTNER SUCCESS IN HEALTH

Our Future Together:

What will our community look like if we fully succeed in reaching our goals?

We aim to lower local obesity rates and to increase access to health resources for special needs clients, diabetics, vulnerable and disabled citizens in order to strengthen an individual's ability to proactively manage healthcare costs. These improvements increase individuals ability to live healthy independent lives.

What success looks like for the 19,721 served...





Join the Movement

Yearly, lead with your experience by joining **RSVP**.

February through May help decide where funds can do the most good as a **Community Investment Health Panelist**.

October, volunteer or host a one-day project as part of **Day of Caring**.

For more information, call United Way at 850-434-3157.

COMMUNITY ISSUES AND HOW WE LIVE UNITED

The health of our citizens is worse than Florida as a whole in many areas. However, no single organization or individual can tackle all problems at once. The Live Well Partnership for a Healthy Community has identified the top four health priorities that our community must embrace to succeed. These priorities center on access to care, food security and access, healthiest weight and tobacco use.

The Live Well Partnership for a Healthy Community was formed in 1994 with the mission of assessing health status, identifying priority health needs, and supporting collaborative efforts to address those needs to improve health and quality of life for the residents of Escambia and Santa Rosa Counties in Northwest Florida. In reality, the partnership is an example of how through collective action, citizens and concerned partners can support a variety of initiatives to improve health outcomes for all residents.

United Way has several team members and board leaders who are committed to the Live Well Partnership because no organization in our community can solve this problem alone. In the last year, this became more evident than ever as the Robert Wood Johnson Foundation report ranked Escambia County in the bottom one-fourth of Florida counties. We rank equally poorly in terms of Health Behaviors of our residents. United Way believes partnership is the only avenue to tackling complex health and social issues in our community. Together, we can make the most difference if we focus community efforts on improving access to primary care and the quality/capacity of food delivery systems through a foundational expansion of the 5-2-1-0 program, a mobile farmer's market and increased diabetes education. By focusing, we can target better access and education in order to reduce weight-related chronic disease. To reduce tobacco-related disease and deaths, the current priority is to focus on reduced acceptance and use of e-cigarettes.



For more information on the partnership, call Nora J. Bailey, Executive Director Partnership for a Healthy Community at 850-291-6410.

OUR WORK IN FINANCIAL STABILITY

Our financial stability collaborative works to CREATE SELF SUFFICIENCY so that more citizens can live a financially independent life.

United Way and partners work toward decreasing poverty by 1% annually while stabilizing family finances through increased access to free tax preparation, mainstream financial resources, financial literacy, employment and educational opportunities. This can lead to stable housing and sustainable financial success.

**EVERY \$1 INVESTED EQUALS
\$10.47 RETURN ON INVESTMENT**



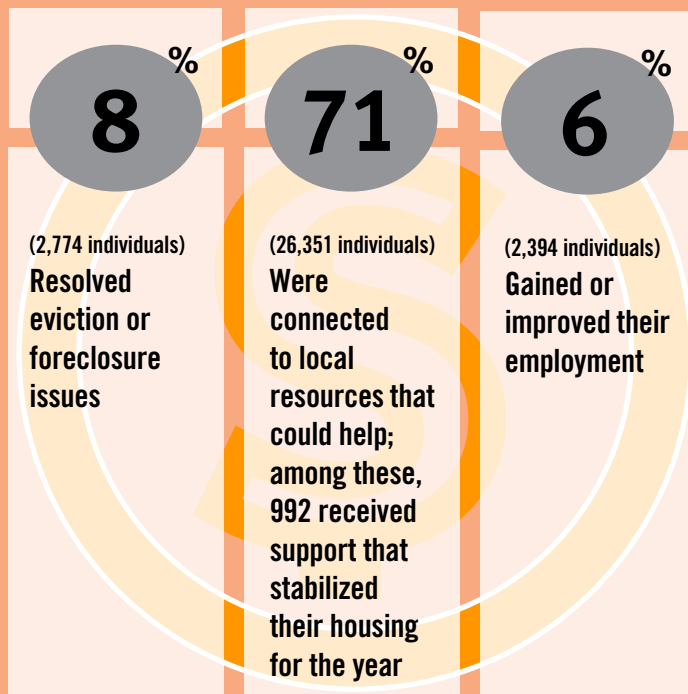
RAISING PARTNER SUCCESS IN FINANCIAL STABILITY

Our Future Together:

What will our community look like if we fully succeed in reaching our goals?

By reducing the percentage of local citizens who live in poverty and are Asset Limited Income Constrained & Employed (ALICE), local citizens will be better prepared to access and use resources that can help them increase the financial stability that is necessary to improve lives and lead to an economically prosperous future for our community.

What success looks like for the 36,976 served...





Join the Movement

October through April help provide free income tax assistance as a **VITA volunteer**.

October, volunteer or host a one-day project as part of **Day of Caring**.

February through May help decide where funds can do the most good as a **Community Investment Financial Stability Panelist**.

Yearly, lead with your experience by joining **RSVP**.

For more information, call United Way at 850-434-3157.

COMMUNITY ISSUES AND HOW WE LIVE UNITED

The February 15 EF3 tornado that impacted North Escambia and the Town of Century devastated the community and destroyed 20% of the 764 housing units that sustained damage. Significant financial struggles in North Escambia are exacerbated by heir properties that do not have clearly documented titles to the family's homestead. The severity of the poverty, combined with a second EF3 tornado that impacted a low-income apartment complex has resulted in continuing concerns regarding the low-income survivor's ability to meet basic needs. Initial estimates in Century showed only 6% had hazard insurance and 38% had content insurance.

United Way believes that housing is an issue that prevents families from moving out of despair. Future opportunities are limited for the 51% of the local citizens classified as rent burdened (more than 35% of their income is used to pay for housing). Our role as a Sadowski Affiliate is essential to our work.

The Sadowski Housing Coalition is a nonpartisan collection of 30 diverse statewide organizations that initially came together in 1991 to obtain a dedicated revenue source for Florida's affordable housing programs, now known as the Sadowski Act. Facing today's tough economic times, the Sadowski Housing Coalition urges the Florida Legislature to use Florida's housing trust fund monies solely for housing and help create 32,600 jobs and \$4.6 billion in positive economic impact in Florida. For more information on the Sadowski Housing Coalition, visit <http://www.sadowskicoalition.org/>.

As an affiliate, United Way believes the State should honor the will of local voters who voted to increase the documentary tax stamps that could then be used to support low-income housing. Escambia County has received SHIP (State Housing Initiatives Partnership) funds totaling \$1,954,360 for low-income housing. These funds are similar to those recently used to support victims of the April 2014 floods, SHIP funds are now being used to help tornado victims in Escambia county recover.



2015-16 COMMUNITY PARTNERSHIPS

EDUCATION

AMKids Pensacola
Autism Pensacola
Big Brothers Big Sisters of Northwest Florida
Boys & Girls Clubs of the Emerald Coast
Be Ready Alliance Coordinating for Emergencies
Capstone Adaptive Learning & Therapy Centers
Chain Reaction
Children's Home Society of Florida
Escambia County School District
Every Child a Reader Escambia
Independence for the Blind
Pace Center for Girls
The Global Corner
YMCA of Northwest Florida

HEALTH

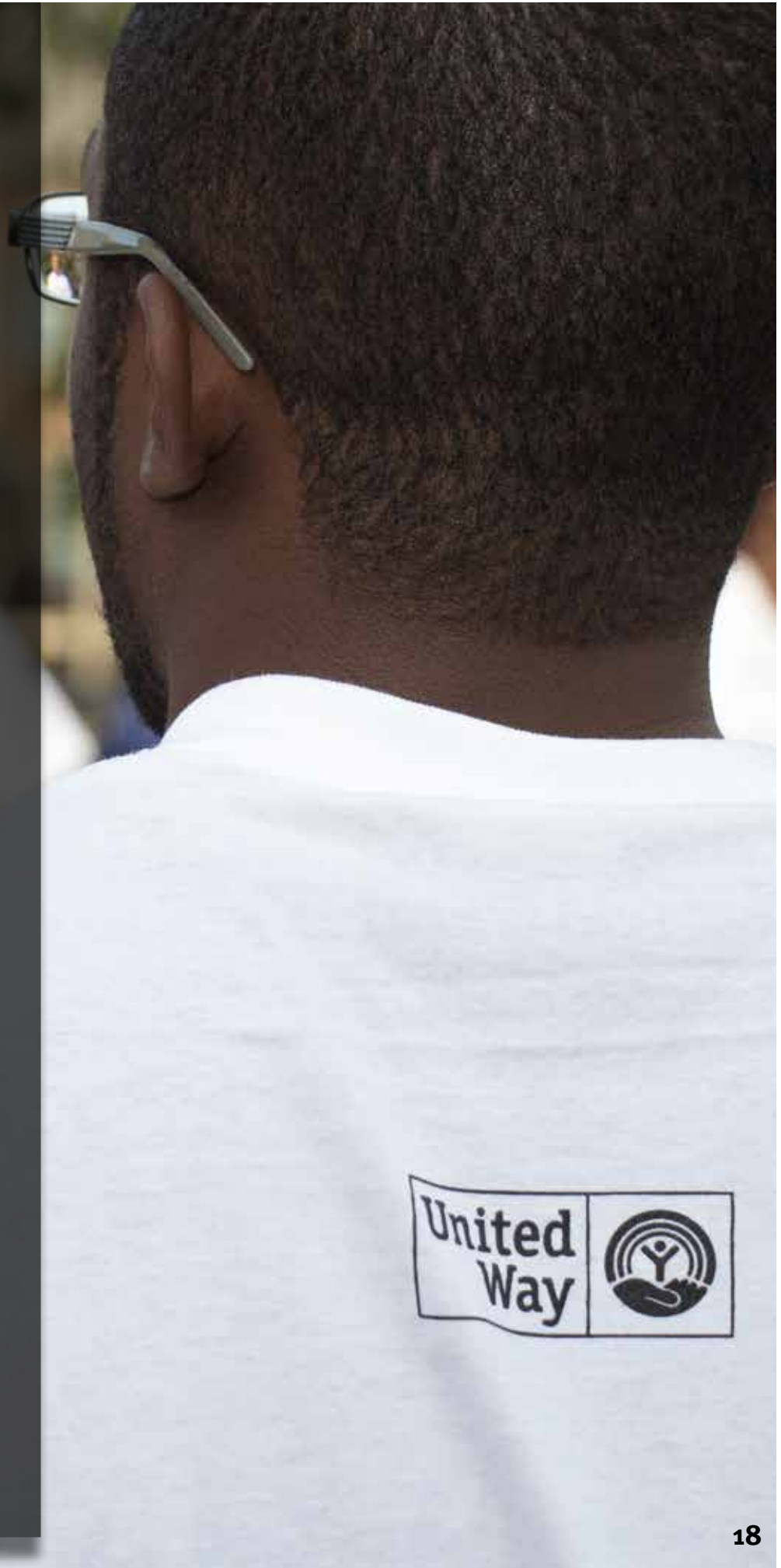
ARC Gateway
Autism Pensacola
Baptist Health Care Foundation
Boys & Girls Clubs of the Emerald Coast
Capstone Adaptive Learning & Therapy
Children's Home Society
Council on Aging of West Florida
Epilepsy Foundation of Florida
Gulf Coast Kid's House
Health and Hope Clinic
Independence for the Blind
Lakeview Center
Lutheran Services
Manna Food Bank, Inc.
New Beginnings Group
YMCA of Northwest Florida

FINANCIAL STABILITY

American Red Cross
Be Ready Alliance Coordinating for Emergencies
Boys & Girls Clubs of the Emerald Coast
Catholic Charities
Early Learning Coalition of Escambia
FavorHouse of Northwest Florida
Goodwill Easter Seals of the Gulf Coast
Legal Services of North Florida
The Salvation Army
United Way 2-1-1 Northwest Florida

DISASTER RELIEF

Alabama West FI Conference (UMCOR)
American Red Cross
Be Ready Alliance Coordinating for Emergencies
Catholic Charities
Escambia Healthy Start Coalition
Legal Services of North Florida
St. Vincent de Paul
The Salvation Army
United Ministries
United Way 2-1-1 Northwest Florida





PROGRAMS AND INITIATIVES

CRAM THE VAN

Cram the Van, the school district approved supply drive, ensures Escambia County students have supplies needed to succeed.

In 2015, our community distributed over \$100,000 in supplies to 64 local schools in every grade level. Factoring seven supplies per student, 10,020 students were assisted through the program. \$16,546 in volunteer labor resulted from 203 volunteers giving a total of 717 hours. Over 30 local businesses held collection drives for donated supplies.

COMMUNITY INVESTMENT

United Way donors reviewed programs and invested limited resources where they could do the most good. These donors considered community needs and United Way's ten goals centered on improving lives locally.

In 2015, 63 volunteers dedicated 1,470 hours to review programs. Of these, 47 programs were funded for a total of \$1 million in awards.

DAY OF CARING

Day of Caring is the largest single volunteer day of service that gives individuals the opportunity to learn the needs of the community while helping a nonprofit or school.

In 2015, 1,456 volunteers worked together to complete 84 projects. Volunteers provided 8,725 hours of service valued at \$201,286, impacting 7,456 people in our community.

EDUCATION SUMMIT

The inaugural education summit hosted at Gulf Power and sponsored by Sacred Heart Health System had the full support of the Escambia County School District Superintendent of Schools. School district social workers and guidance counselors attended the one day summit to hear from nonprofits in attendance that had services that could support children in our schools.

In 2015, the Education Summit was attended by 73 school district employees from 35 schools and 26 local nonprofits. Local schools identified a need for

mentors, mental health aid and childcare assistance for children without direct parental supervision. They asked nonprofits to support these and other critical needs.

FamilyWise PRESCRIPTION ASSISTANCE PROGRAM

FamilyWise is a longtime partner of United Way, working with nearly 1,000 local United Ways dedicated to helping improve the health and well-being of individuals, families and communities.

In 2015, this program has helped 3,920 local citizens save over \$311,633 on prescription medication.

FISCAL AGENT

United Way serves as the fiscal agent for Communities Caring at Christmas and Christmas Wishes. These programs were true community collectives where individuals and business partners collected funds and gifts to help parents and foster families provide a joyful holiday for vulnerable children and for adults with developmental disabilities. Whether partners helped with a toy or gift drive or whether they attended Miracle on Palafox, their efforts generated \$107,085 that was used to serve 9,265 individuals.

FREE TAX ASSISTANCE PROGRAMS

The Volunteer Income Tax Assistance (VITA) and MyFreeTaxes.com programs provide low-income families with free tax filing options, both online and in-person. IRS certified volunteers prepare taxes and offer support for individuals and families making less than \$62,000 per year.

Four VITA sites across Escambia and Santa Rosa counties are open from January through April, and the MyFreeTaxes helpline operates from January through May, answering questions for taxpayers utilizing the MyFreeTaxes.com program.

In 2016, the VITA and MFT programs resulted in a \$5.9 million impact on the community. 59 volunteers saved local taxpayers over \$400,000 in preparation fees and returned \$1.4 million dollars of the Earned Income Tax Credit and \$4.5 million in refunds to working families in the two-county area.



PUBLIX EMERGENCY ASSISTANCE

The Publix Emergency Assistance Program is a last resort fund to assist employed families or individuals in need. Eligible clients are case managed by 2-1-1 staff and payments are made directly to the utility company or landlord. Clients must meet certain criteria before approval is given and all payments are made directly to the providers.

Working families and individuals are not immune to unexpected financial hardships. Last year 2-1-1 assisted six eligible clients with utility bills and past due rent payments. This assistance allowed clients to remain in their homes and continue working.

ReadingPals

ReadingPals is a school-based mentoring program that helps 4-year-old prekindergarten students build the strong pre-literacy skills necessary for kindergarten success. By supporting children early, we can work toward increasing our high school graduation rate that is currently at 72.7%.

During the 2015-16 school year 227 volunteers served a total of 3827 hours. Community members and volunteers donated \$1,346 of in-kind goods to support the Program. Including the value of volunteer labor and in-kind donations, ReadingPals had an \$89,640 impact on our community.

RSVP

The Retired and Senior Volunteer Program is sponsored by the Corporation of National and Community Service. Through this program, individuals 55 and better are able to use their time and talents to meet the community's needs. In 2015, 112 volunteers served 9,206 hours valued at \$216,893 at 15 sites.

SUMMER BREAKSPOT

The Summer BreakSpot Program is federally funded under the U.S. Department of Agriculture (USDA). Sites are locally operated by nonprofit organizations that provide meals and receive reimbursement from USDA. Organizations offering activity programs are often schools, community centers, recreation centers and faith-based organizations. Summer BreakSpot works to fill the nutrition gap during the summer months by serving meals to children 18 and under so they can return to school healthy and ready to learn.

2-1-1 Northwest Florida makes referrals for callers who want to connect their children to the program. Last summer, 2-1-1 made 165 referrals for Escambia County callers alone.

United Way is committed to creating a community where our citizens support each other. In the last year, we invested \$78,003 in general volunteerism that created a \$600,728 impact on our community. For every dollar invested in volunteerism the community received a \$7.70 return on investment.

THANK YOU COMMUNITY PROGRAM PARTNERS!

2-1-1 Northwest Florida, ADX Communications Of Escambia - 98.7 FM / 1620 AM, Alorica Call Center, American Red Cross of Northwest Florida, Anderson & Associates, AppRiver, Arc Gateway, Autism Pensacola, Azelea Trace, Beach Community Bank, Big Brothers Big Sisters of Northwest Florida, Be Ready Alliance Coordinating Emergencies (BRACE), BRACE/Heritage Oaks, Brownsville Community, Buffalo Rock, C.A., Weis Elementary School, Central Credit Union, Children's Medical Services, Comfort Dental Care and Orthodontics, Community Action Program Committee, Council on Aging of West Florida, Cox Communications, Covenant Hospice, Ebonwood Community Center, EmCare, Escambia County School District, Escambia County Utilities Authority, Every Child A Reader In Escambia, Escambia County Healthy Start Coalition, FamiliesFirst Network, FamilyWize, Fisher Brown Insurance, First City Arts Center, Florida Blue: Health Insurance for Florida, Florida Department of Children and Families, Fortis Institute, Global Connections to Employment, Gulf Power Company, Head Start, Healthy Start Coalition of Santa Rosa County, Humana, Lakeview School, Lipscomb Elementary School, Legal Services of North Florida, Manna Food Pantries, Montclair Elementary School, Navy Federal, North Escambia County, Northwest Florida Paralegal Association, Pathways for Change, Pensacola International Airport, Pensacola Legal Support Specialists Association, Pensacola MESS, Pensacola Museum of Art, Pensacola News Journal, Pensacola State College, Pensacola State College Association of Florida Colleges, Planet Fitness, Publix, Regions, Sacred Heart Health System, Sandy Sansing Dealerships, Seville Rotary, Studer Group, St. Sylvesters Catholic Church, Title I/FRAME, Underwood, Veranda of Pensacola, Volunteer Income Tax Assistance, Wal-mart, Warrington Middle School, WEAR Channel 3 TV, WFGX TV, Wind Creek Hospitality



As our area's primary connection to the community, health and support services, 2-1-1 Northwest Florida makes more than 54,000 referrals for over 26,000 callers each year. Our free, 24/7 help line and searchable online database are available to anyone.

CURRENT SERVICE AREAS:

Escambia, Bay, Calhoun, Gulf, Holmes, Jackson and Washington County

YEAR END RESULTS FOR 2015-2016

26,135 people called 2-1-1 Northwest Florida

54,710 referrals were given

63,150 unique visitors to www.211nwfl.org

2-1-1 is an asset for local agencies and a resource for their clients.

2-1-1 provides a snapshot of community needs as well as gaps in available services.

2-1-1 assesses call data to determine unmet needs and emerging issues. This information is provided to city, county and community leaders.

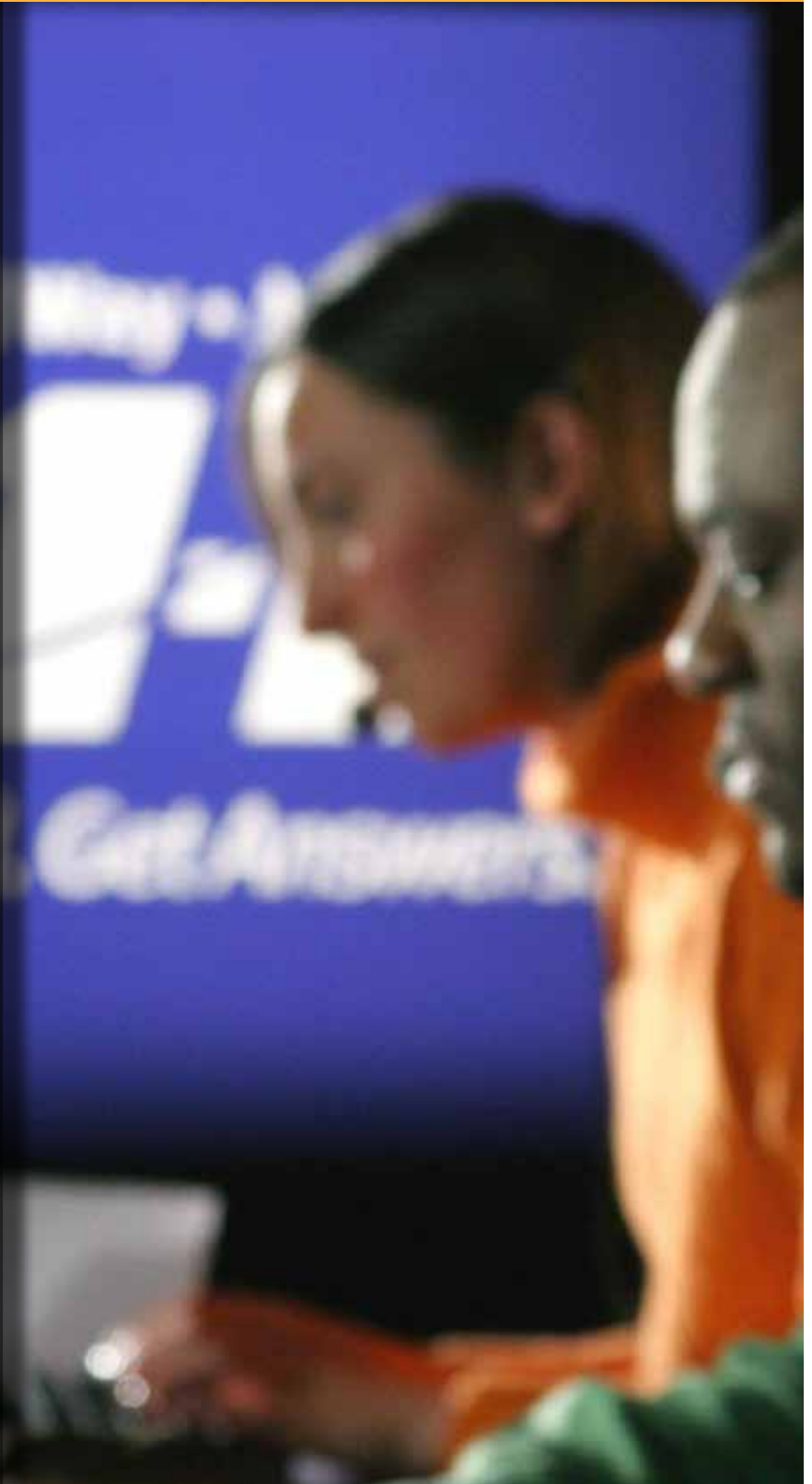
ADVOCACY

Oftentimes, local citizens need additional help getting assistance. United Way 2-1-1 Specialists contacted agencies on behalf of **790** callers who needed specialized assistance last year. This additional care sometimes makes the difference.

DISASTER CASE MANAGEMENT

United Way 2-1-1 Case Managers worked diligently with several volunteer groups and agencies to bring relief and hope back to members of our community who had experienced great loss from the 2014 flood. Ending 2015, the Escambia County Long Term Recovery group along with 2-1-1 completed **82** home repairs.

2-1-1 received a grant from United Way of Escambia County to assist survivors of the two tornados that devastated Escambia County. Through this grant, 2-1-1 was able to assist eight survivors with rental assistance for safe housing and insurance deductibles to secure repairs on their homes.



AND THE HONOREES ARE...

United Way is honored to recognize outstanding individuals, businesses and agency partners who have made significant contributions in our core focus areas of education, health and financial stability.

UNITED WAY PARTNER AGENCY OF THE YEAR

Boys and Girls Clubs of the Emerald Coast

Boys and Girls Clubs of the Emerald Coast is our Agency Partner of the Year. Their commitment to collaboration was demonstrated in several ways. They entered into a partnership with Manna, Monsanto, the Escambia County School District and the Switzer Brothers Charitable Foundation to create a program, Tummy Bundles, that provides nutrition to students attending their club at Montclair Elementary. Their new executive, Leslie Hunter-Huff, is proving to be a leader dedicated to making a huge difference in the lives of children. They always look to find ways to expand their service in partnership with United Way and in addition to their intensive work at the club, Huff serves as a Loaned Executive, a Leadership Pensacola Class Member, a United Way Agency Director's Association Member and a partner in all three United Way fields of focus. They hosted a Day of Caring project and ran a United Way workplace campaign.

DISTINGUISHED BUSINESS PARTNER OF THE YEAR

Gulf Power Company

Gulf Power Company continues their distinguished role as a motivator of broad community change as United Way's Business Partner of the Year. In addition to efforts that led all other workplace campaigns, they are recognized as significant community partners in Day of Caring (with 9 projects, 112 volunteers and 762 volunteer hours). They hosted a meeting to help launch the WLC, provided 7 Loaned Executives, 15 Reading Pals, 16 Community Investment Volunteers, 51 Red Feathers, 2 Tocqueville Society Members and had 2,163 company wide volunteer hours last year. Additionally, they are one of four corporate partners launching the cradle to career Achieve Escambia initiative. They hosted and coordinated a childhood hunger workgroup to help solve challenges to a highly diverse system, actively supported Communities Caring at Christmas, sponsored our Education Summit, recruited continuing support from their retirees and had three employees who serve in chair roles on our board. They are a Diamond Donor.

UNITED WAY SERVICE AWARD

Deb Moore

Deb Moore is receiving the United Way Service Award for her dedication and commitment to United Way. She never hesitates to give her time to any United Way initiative and always shows up with a smile on her face and willingness to serve. Her service as a Board Member, Chair of Advocacy and 211, ReadingPal, Women's Leadership Council member, Community Investment Panel member, and countless other roles has resulted in 200 hours given to United Way this year. Though new to service with United Way, she enlisted a workplace campaign and effectively tied her community pursuits in ways that allowed her to share insights learned in service on the low-income Housing Coalition to the benefit of United Way and partners.

DISTINGUISHED COMMUNITY SERVICE

Pam and Harry Schwartz

Pam and Harry Schwartz lead giving as dedicated United Way Tocqueville Society Members. In addition to hosting a Tocqueville Society event at their home, Pam is an active WLC member, Reading Pal, advocate and supporter of the Gulf Coast Kid's House and others. They actively support arts in the community and have been recognized for that support by the Pensacola Opera and Ballet Pensacola. Celebrated for their broad philanthropic efforts locally, they have also been recognized by AFP of West Florida as part of the National Philanthropy Day.

RAYELL IRISH - "COLOR A BRIGHTER WORLD"

Stacey Kostevicki

Stacey Kostevicki is recognized for her commitment to making a difference in the lives of children in our community. The determination shown in her work represents the true spirit of service. She has served as the Executive Director for Gulf Coast Kids House for five years and is an active chair of the State Children's Advocacy council. Stacey has been a driving force in change that extends beyond our local boundaries but maintains her commitment to this community by willingly serving as a panelist and trainer, sharing best practices with other nonprofit professionals. Her passion for serving others can be seen in the dramatic change in community efforts to advocate publicly for our local children. She takes this service personally and serves as a local ReadingPal. While working with the abused children and their families is challenging on the best of days, Stacey never sways from helping others.

BOARD MEMBER OF THE YEAR

Jack Lowrey

Jack Lowrey is often seen around town LIVING UNITED. As a visual reminder of his commitment to United Way, Jack proudly wears his many United Way promotional shirts and items. He even took it upon himself as a new board member to visit United Way's online store to find additional items to proudly display this commitment. Outside of his role as Co-Chair of the Workplace Campaign, Jack also actively participated on the Finance Committee and as a Community Investment Panel Co-Chair. Seldom did a week pass that Jack was not seen on social media proudly displaying how he LIVES UNITED. Jack helped recruit donations for the tornado victims by soliciting donations at Cordova Mall and reviewed requests for support from local agencies who responded to the disaster. He never refused our calls for help but willingly found the time and the resources to make United Way visible in the community. He supported us at the Annual Meeting, Campaign Kickoff, Campaign Finale, monthly meetings with staff and LE Trainings. "Where's Jack" was a common conversation at the weekly director's meeting.



A MESSAGE FROM DAVID PEADEN

DAVID PEADEN
UNITED WAY BOARD CHAIR

To LIVE UNITED is a choice. It is one we make because we love this community and we want our children to have opportunities and memories that encourage them to stay and raise their families

here. The United Way Board leads collaborative work in the community and is comprised of community leaders, financial experts, community advocates, nonprofit executives, healthcare professionals, educators, HR professionals and more. These roles are important to our work, but they are not what make our Board special. What makes them special is their commitment to you and our community. They are mothers and fathers, sisters and brothers, friends and volunteers. They all care about this community. It is why they gave a total of 1651 hours in service to you and the community they love. It is why we were able to create a \$4.78 return on every dollar the community entrusted to United Way.

While there is still more to do, we should all be encouraged by these results and the donors and volunteers who gave generously last year. Like my fellow board members, I was inspired by the children who donated their pennies to help neighbors recover from the tornadoes and the parents who donated school supplies so another child could get the best start in school...Seniors volunteering to help someone else's child by donating school supplies or by volunteering with RSVP to do free tax preparation for a low-income family and the Women's Leadership Council members who served as ReadingPals were all reasons to be grateful. People proved they care and it made me proud to call this place home.

Even with the caring and compassion that we see among many in our community, it is evident that there is more work to be done. This is why United Way chose to serve as an AmeriCorps geographic intermediary and to serve as the fiscal agent and the backbone convener for the Achieve Escambia. Poverty is an old issue, as is the financial stability of many working families who struggle paycheck to paycheck. Only by remaining committed to solving these problems can we progress forward in the face of unexpected events like tornados. We need your help and partnership to continue efforts which will take firm dedication for many years. The EF3 tornadoes may have happened in February, but there are many families who are just now getting help to start the long road of recovery ahead. United Way is doing what we can to help with \$487,325 invested in tornado and flood recovery that returned a \$3,655,713 positive impact on our community this past year. To continue progress toward a better life for all, more companies and more partners must choose to LIVE UNITED.

If you need a reason, consider ours...To ensure that all citizens have the opportunity to improve their lives and support their families... to ensure our community is one we are proud to leave to our children. These reasons and many more are why we LIVE UNITED every day!

2016-2017 BOARD OF DIRECTORS

OFFICERS:

- | | |
|------------------------|-------------|
| David Peaden | Chair |
| Yvette McLellan | Chair Elect |
| Cathy England | Treasurer |
| Jo McArthur | Secretary |

EXECUTIVE MEMBERS:

- | | |
|-----------------------|----------------------------|
| Trip Maygarden | Community Impact Chair |
| John Floyd | Community Investment Chair |
| Jack Lowrey | Campaign Chair |

COMMITTEE LEADERS:

- | | |
|---------------------|--|
| Amy Miller | Campaign Co-chair |
| Cedric Durre | Co-Chair Community Investment |
| Tammy Davies | Women's Leadership Council Chair |
| Wes Hudgens | Nominating Chair |
| Deb Moore | Advocacy/211 Chair |
| Tim Putman | United Way Agency Director's Association Chair |

BOARD

- Meri Asmar**
- Brian Baumgardner**
- Brett Bennett**
- KC Gartman**
- Brian Matson**
- Tim Putman**
- Michelle Scaglione**
- Matthew Shook**
- Oliver Sumlin**
- Jonathan Taylor**
- Malcolm Thomas**
- Bruce Vredenburg**
- Patrice Whitten**

NEW BOARD MEMBERS

- Scott Ginnetti**
- Genevieve Harper**
- John Hosman**
- John Isbell**
- Tim Stronko**

RETIRED BOARD MEMBERS: Thank You for Your Service!

- | | |
|---------------------|---------|
| Gary Sammons | 7 years |
| John Falduti | 1 year |
| KC Donahey | 1 year |



Board of Directors meet at United Way on the fourth Thursday of every month excluding August and December. The executive committee meets one hour and fifteen minutes before the board for an hour, and the full board meets for an hour. Terms are elected annually and members can serve three-year terms without chairmanship or officer responsibilities before they must come off for a minimum of one year. At six years, board members must reapply and at nine years they are required to retire for at least one year.

KEY VOLUNTEER LEADERSHIP

Community Investment Panel Chairs:

Brett Bennett
Tammy Davies
Cedric Durre
John Floyd

KC Gartman
Meagan Leonard
Jack Lowrey
Deb Moore

Day of Caring Committee Members:

Jamie Cochran
Bill Maudlin
Tara Kermiet
Michael Listau
Chris Stafford
Matthew Teston

Johanna Allard
Larry Cherry
Tim Land

Free Tax Site Coordinators:

Jeff Abram
Charles Bone
Jerry Fritz
Skip Hardenburg

Laura Krisbell
Kelvin Johnson
Joe Santos
Nancy Taylor

RSVP Advisory Council:

Alma Lett
Dr. Cheryl Perry
Deanna Jones-Moses
Jonathan Diamond
Julia Brady

Larry Draeger
Maggie Smethers
Mary Lynn Williams
JoAnn Howansky

If you are interested in serving on a volunteer leadership committee, please contact United Way at 434-3157 or info@unitedwayescambia.org.





NON-PROFIT TRAINING SERIES

United Way of Escambia County provides a training series designed to help nonprofit professionals improve their skill sets. Topics include board governance, fundraising, business and strategic planning, building a brand, grant writing and more.

Trainings are offered from January to October. If you would like to register for sessions, please contact Melissa Lewis, Director of Administration/HR at melissa@unitedwayescambia.org.

IMPACTS

Seventy nonprofit professionals attended nonprofit training in the last fiscal year. At the end of the trainings, pre and post-test averages demonstrated a 24% gain in knowledge and in attendees comfort level with the subject area and knowledge of where to find resources to further help their organizations.

PARTICIPANTS

- A Safe Port
- Andrews Research Institute
- Animal Allies of Florida
- Big Brothers Big Sisters
- Boy Scouts Gulf Coast Council
- Boys & Girls Clubs of the Emerald Coast
- Be Ready Alliance Coordinating for Emergencies
- Campfire
- Campfire Santa Rosa
- Capstone Adaptive Learning & Therapy Centers
- Chain Reaction
- Children's Connections
- Choral Society of Pensacola
- CIL Disability Resource Center
- CLEI Task Force
- Community Action Program
- Consumer Credit Counseling
- Creative Learning Academy
- Deaf & Hard of Hearing Services
- Every Child A Reader in Escambia
- Escambia County Healthy Start Coalition
- Escambia County Medical Society
- Escambia County Schools Foundation
- Florida Blue
- Global Business Solutions Institute
- Gulf Coast African American Chamber
- Gulf Coast Kid's House
- Gulf Coast Veterans Advocacy
- Health & Hope Clinic
- Independence for the Blind
- Keeping Abreast Foundation
- Learn to Read
- Legal Services of NWFL
- Lifestyles Worthwhile
- Lifetime Training Solutions
- Lighthouse Christian Academy
- Manna Food Pantries
- Milk and Honey Outreach
- Ministry Village
- My Fathers Arrows
- NWFL DFLAG
- PACE Center for Girls
- Pathways for Change
- Pensacola Mess Hall
- Pensacola Opera
- Pensacola State College Foundation
- Perdido Seafood Festival
- Rebuild Northwest Florida
- Ronald McDonald House Charities
- Sickle Cell Disease
- St. Mary Baptist Church
- The Arc Gateway
- The Extra Mile
- Trinity Worship Center
- United Ministries
- Waterfront Rescue Mission

THANK YOU TRAINERS

Grier Halstead and Missy Rogers, The Arc Gateway; Malcolm Ballinger, Ballinger Publishing; Mollye Barrows, BLAB TV/Studer Community Institute; Ed Carson, Carson Construction; Brent Lane, Cat Country 98.7/ADX Communications; Kristin Fairchild, Chain Reaction; Bryan McCall, Duncan McCall Advertising; Bruce Watson, Early Learning Coalition; Shane Rowe, Emmanuel Sheppard and Condon; Cindy Bear Bonner, Fitness Onboard; Stacey Kostevicki, Gulf Coast Kid's House; Verdell Hawkins, Gulf Power; Holly Smith, H2 Performance Consulting; David Peaden, Home Builders Association of West Florida; Mari Abbate, IMPACT 100; Rick Outzen, Independent News; William Cleary, Landrum Professional Employer Services; Dede Flounlacker, Manna Food Pantries; Margaret Stopp, Moore, Hill & Westmoreland; Isabelle Thompson, Navy Federal Credit Union; Meagan Leonard, Pensacola Chamber of Commerce; Tom Ninestine, Pensacola News Journal, Debbie Douma, Pensacola State College, Aaron West, Pensacola State College Foundation; Eddie Hill, Prosperous I.M. Inc.; Brett Bennett, Publix Supermarkets; Lauren Stimmel, Ronald McDonald House Charities; Greg Storey, Saltmarsh, Cleaveland, and Gund; Scott Egstad, Scott Egstad and Company; Shannon Nickenson, Studer Community Institute; Randy Hammer, Studer Institute; Bill Chiles and Shana Davis, Target; Devin Simmons, Waterfront Rescue Mission; Sue Straughn, WEAR TV3; Andrea Rosenbaum, YMCA

LOANED EXECUTIVE LEADERSHIP PROGRAM



Loaned Executives (LEs) are volunteers who are “loaned” to United Way by their employers to serve as the primary advocates for the Workplace Campaign. LEs are on the front line of community change as they strive to increase support and contributions to the campaign. The LE Leadership Program is designed to help participants develop their leadership skills and professional networks through monthly training seminars that feature key community leaders.

In 2015-16, 20 Loaned Executives helped raise over \$2 million during the Workplace Campaign and participated in 6 training sessions to increase their leadership skills and knowledge of key community issues.

2015-16 LOANED EXECUTIVES

Christina Acosta	University of West Florida
Krystle Aman	Early Learning Coalition of Escambia County
Becky Bromley	Wells Fargo
Kelly Cooke	Gulf Power Company
Lynn Eiland	Florida Department of Children and Families
Ashley Faulkner	Fortis Institute
Douglas Gardner	Gulf Power Company
Sara Harlow	Gulf Power Company
Tori Harris	Gulf Power Company
Scarlett Henson	U.S. Dept. of State
Kelly Jasen	Northwest Florida Area Agency on Aging
Jason Jones	Gulf Power Company
Georgia Lee Ketchum	West Florida Healthcare
Maegan Leonard	Greater Pensacola Chamber of Commerce
Kelly MacLeod	Gulf Coast Kid's House
Becky Matthews	United Healthcare
Karen McLendon	Gulf Power Company
Clinton Retherford	Gulf Power Company
Jared Rorrer	Gulf Power Company
Lynsey Stuart	Pensacola State College





EMERGING LEADERS SOCIETY

Emerging Leaders are donors ages 21 to 40 - who commit to LIVE UNITED 365 days per year by giving \$1 a day to United Way and other activities such as volunteerism and advocacy. Above all, they are leaders who are passionate about improving and contributing to our community.

EMERGING LEADERS 2015 - 2016

Franklin Alexander
 Joy Alumbaugh
 Lauren Anzaldo
 Cherri Baker
 Brett Bennett
 Danshell Brooks
 Paul Carter
 Donya Charles
 Amanda Clonts
 Phillip Coleman
 Matthew Coughlin
 Rachael Cox
 Jeremy Creech
 Carrie Cromey
 Roy Davis
 Patrick Dickerson
 Angelene Dodson
 Darrick Elmore
 Alain Espinosa
 Laura Garrett
 Frank Giammaria
 Robyn Havard
 Travis Hicks
 Kimalia Hinton
 JoAnn Howansky
 Brandon Humphreys
 Charles James
 Kelly Jasen
 Tara Jones
 Wayne Jones
 Sandra Lechuga-Corrales

Tanya Lockett
 Jennifer McFarren
 Pam McKinney
 Rebecca McLellan
 Kristi Meyers
 Jennifer Miller
 James Myers
 Caitlin Newby
 Richard Norris
 Katie Odom
 Sharhonda Owens
 Miguel Puentes
 Stacey Ramos
 Scott Remington
 Brandon Rogers
 Joshua Rogers
 Leslie Saam
 Kelly Scharer
 Frederick Stallworth
 Staci Stutts
 Thomas Styranec
 Oliver Sumlin
 Raymond Vannice
 Carolyn Ward
 Lyndi Warner
 William Wilson
 Michael Wise
 Maryann Wyrick
 Ahmound Young

** 5 donors chose to remain anonymous*

**** If we have inadvertently missed your name or you would like to have your name listed differently, please accept our apology and let us know by calling 850.434.3157.**

WORKPLACE GIVING

\$200,000 AND UP

Gulf Power Company
Publix Super Markets

\$50,000 AND UP

Armstrong World Industries, Inc.
Ascend Performance Materials
Baptist Health Care Corporation
Escambia County School District
ExxonMobil Corporation
International Paper Company
Navy Federal Credit Union
Regions Bank
United Parcel Service

\$25,000 AND UP

AT&T Communications
City of Pensacola
Landrum HR Companies
Wells Fargo Banking and Advisors

\$10,000 AND UP

Bank of America/Merrill Lynch Wealth Management
Clark, Partington, Hart, et al.
Council on Aging of West Florida
Enterprise Rent-A-Car
Escambia County
Escambia County Clerk of the Circuit Court and Comptroller
Gulf Winds Federal Credit Union
Lewis Bear Company
McMillan Foundation
Pall Life Sciences
Southern Scrap Company
Target Corporation
United Way of Escambia County
University of West Florida
Warren Averett O'Sullivan Creel LLP
WEAR-TV Channel 3
West Florida Healthcare

\$5,000 AND UP

Belk
Central Credit Union of Florida
Coastal Bank and Trust
Federal Express Corporation
Florida Blue
General Electric Company
Gulf Coast Community Bank
Hancock Bank
Hobart Corporation
McMahon-Hadder Insurance
Pensacola Shipyard Marina and Boatyard
Pensacola State College
ServisFirst Bank
SunTrust Banks, Inc.
Walmart

\$1,000 AND UP

American Fidelity Life Insurance Company
American Water
Animal Hospital of Pensacola
Applecorp, Inc.
ARC Gateway
BBVA Compass
Big Brothers Big Sisters of NWFL
Be Ready Alliance Coordinating for Emergencies
Buffalo Rock Company
Bullock Tice Associates
Carver, Darden
Cerex Advanced Fabrics
Children's Home Society
Combined Federal Campaign
Community Drug & Alcohol Council
Connell & Manziek Realty
Covenant Hospice
CSL Plasma
Deloitte & Touché LLP
Dillard's
Early Learning Coalition
Edwards Roofing Co., Inc.

Emerald Coast Utilities Authority
Emmanuel, Sheppard & Condon
Escambia County Property Appraiser
Escambia County Tax Collector
Florida State Employee Charitable Campaign
Goodwill Easter Seals
Greater Pensacola Chamber of Commerce
Gulf Coast Health Care, LLC
Hatch Mott MacDonald
IMS ExpertServices
Independence For the Blind
Irby Company
Legal Services of North Florida
Levin Papantonio
Lutheran Services Florida
Massey Services Pest Control
Moore Hill and Westmoreland
Northwest Florida Area Agency on Aging
Raymond James/Morgan Keegan
Saltmarsh Cleaveland & Gund
Shell Fleming Davis & Menge
Shell Oil Company
Summit Bank
The Mundy Companies
The Salvation Army
Thompson Caterpillar/Thompson Tractor
Underwood Anderson and Associates
Virginia College
Wiginton Fire Systems
YMCA of Northwest Florida





WOMEN LEADERSHIP COUNCIL

The United Way Women's Leadership Council (WLC) is a global network of more than 60,000 women in 155 Communities. Locally, our Women's Leadership Council focuses on improving community outcomes in education through mentoring programs that support young women, Achieve Escambia, Cram the Van, ReadingPals, the CA Weis Community School and local Education initiatives.

WLC MEMBERS 2015 - 2016

- | | | | |
|------------------------|-----------------------|------------------------|-------------------------|
| Loretta Adams | Anne Dyson | Melissa Lewis | Katia Rutledge |
| Kathy Anthony | Krista Ebbert | Tanya Lockett | April Sadler |
| Meri Asmar | Jennifer Eckhoff | Janine Lockman | Shirley Sammons |
| June Baker | Linda Ellis | Kathleen Logan | Sarah Sanchez |
| Christine Baldwin | Olivia Emmanuel | Margaret Lorren | Michelle Scaglione |
| Bessie Ball | Cathy England | Patty Lowrey | Kelly Scharer |
| Treasa Bartley | Barbara Enzor | Kim MacQueen | Sheila Schultz |
| Jessica Beal | Barbara Lynn Erickson | Shannon Martin | Suzanne Schultz |
| Paige Beall | Lisa Esser | Brenda Mathews | Pam Schwartz |
| Jennifer Bear | Catherine Fair | Alicia Mathis | Shardra Scott |
| Belle Bear | Paula Ferraro | Myra Mathis | Erin Senato |
| Warnelle Beasley | Delesa Fisher | Michele McCarthy | Cordie Shaw |
| Jennifer Beecher | Ellen Fisher | Angela McCorvey | Mimi Sherrill |
| Michelle Bennett | Jennifer Flowers | Lisa McCullough | Kelly Shields |
| Lois Benson | Amy Floyd | Kimberly McDaniel | Melinda Shirley |
| Lisa Bingle | Margaret Fortunato | Jennifer McFarren | Renea Shouppe |
| Alice Blackwell | Cherie Frederick | Pam McKinney | Claudia Simmons |
| Becca Boles | Maralee Geil | Yvette McLellan | Sharon Sims |
| Heike Bolton | Lee Pitts | Wanda McNeal | Jamie Smith |
| Vickie Bolyard | Lucinda Greathouse | Nan McQuagge | Terri Smith |
| Detriz Bowers | Linda Gregory | Muriel Merritt | Brenda Smith King |
| Maria Bray | Debbie Grissett | Jennifer Miller | Rishy Studer |
| Annie Brewer | Jennifer Grove | Stephanie Miller | Susan Southard |
| Daniel Bridges | Phyllis Gureck | Amy Miller | Janet L Speranzi-Cannon |
| Melanie Blinker | Kimberly Haas | Doris Mink | Alexis Steele |
| Audra Broadbent | Joy Hamilton | Christina Moehrke | Jennifer Stewart |
| Rebecca Bromley | Angela Hanson | Margie Moore | Caroline Stickel |
| Ursula Brown | Renee Hardy | Tracy Moore | Sue Straghan |
| Deborah Brown | Carol Harrison | Deb Moore | Rebecca Stronko |
| Jessica Browning | Sherry Hartnett | Ginger Moore | Carolyn Styrance |
| Keitha Buckingham | Diane Havard | Avery Morrison | Kristi Suarez |
| Joan Bullock | Lynn Hayes | Lynnea Myers | Lauren Sumlin |
| Lamonica Burton | Martha Ann Hunter | Beverly Nall | Dolores Taylor |
| Deborah Calder | Jasmine Haynes | Cecilia Nanni | Bentina Terry |
| Carol Carlan | Charlotte Henke | Jean Nelson | Judy Tice |
| Maia Carlstrom | Sharon Hensel | Margaret Neyman | Nancy Timberlake |
| Carolyn Carnley | Mary Hicks | Sheila Nichols | Kimberly Vallia |
| Andrea Lynn Carper | Reba Hierholzer | Sharon Norris | Jess Veasley |
| Angela Carter | Laura Hill | Marcia Nowlin | Cynthia Vick |
| Connie Cassidy | Celia Hilton | Jean Odum | Ellen Vinson |
| Donya Charles | Janet Hodnett | Dr. Catherine O'Malley | Lucy Vredenburgh |
| Molly Cleary | Linda Hoffman | Terry O'Rourke | Sheryl Walker |
| Tammy Clolinger | Paula Hrbacek | Nancy O'Sullivan | Elizabeth Wallin |
| Amanda S Clonts | Kelly Jasen | Cathy Pace | Tasha Walls |
| Thea Coconino | Kathie Jeffcoat | Karen Pallas | Alicia Waters |
| Adrienne Collins | Michelle Jenson | Kara Parker | Raisa Webb |
| Amy Connally | Courtney Jester | Jessica Patterson | Maria Weisnicht |
| Kelly Cooke | Bonnie Johannemann | Susan Peaden | Marian Wernicke |
| Rebecca Cox | Jennifer Lee Johnson | Christina Pendleton | Theresa Wheeler |
| Gayle Cramer | JoAnna Johnson | Sharon Pinkerton | Patrice Whitten |
| Sophia Crawford | Julie Jones | Lee Pitts | Christine Williams |
| Vera Danly | Michelle Kane | Hope Placer | Hattie Williams |
| Lindsay Darnell | Janice Kilgore | Dr. Nell Potter | Gena Wilson |
| Tammy Davies | Laura Kinsey | Marsha Reeves | Michele Wilson |
| Valerie Katrina Dawson | Katie Kirchharr | Amie Remington | Susan Wiscombe |
| Belle Debari | Becky Kirsch | Diedre Rhodes | Elizabeth Woolf |
| Sharon Dietrich | Andrea Krieger | Sharee Rich | Melanie Wroblewski |
| Angelene Dodson | Megan Krist | Margo Rigby | Jasmin Wyer |
| Deitri Dorion | Dietmar Laenger | Susan Ritenour | Joyce Yaden |
| Michelle Dufresne | Nell Landrum | Adine Roberts | Christine Zajac |
| Kathy Dunagan | Rita Lay | Jill Robinson | Hannah Zuniga |
| Elizabeth Dunaway | Alicia Leidner | Sherlena Robinson | |
| Susan Durham | Halli Leidner | Kalyn Rogers | |
| Carolyn Dwelle | Nancy Leonard | Andrea Rosenbaum | |

** If we have inadvertently missed your name or would like to have your name listed differently, please accept our apology and let us know by calling 850.434.3157.

TOCQUEVILLE SOCIETY

The Tocqueville Society recognizes local philanthropic leaders and volunteer champions around the world who have devoted time, talent and funds to create long-lasting change by tackling their community's most serious issues. The Escambia County chapter of the Tocqueville Society was established during the 1996 Campaign with six charter members. The members of this society present United Way of Escambia County with an annual gift of \$10,000 or more.

Society Members

D.W. McMillan Foundation, Charter Member—19 years
Lewis Bear Family Foundation, Charter Member—19 years
Stan & Amy Connally, Jr.—4 years
Skip & Martha Ann Hunter—16 years
Robert H. Kahn Jr. Family Foundation—16 years
Britt & Nell Landrum, Jr., Charter Member—19 years
Fred Levin—17 years

Julian & Kim MacQueen—7 years
Christopher & Katia Rutledge—4 years
Sandy and Peggy Sansing—14 years
Harry & Pam Schwartz—8 years
Quint & Rishy Studer—10 years
Antonio and Bentina Terry—2 year
Roger & Raisa Webb—11 years

AGNES WEIS SOCIETY

LEAVE A LEGACY THAT WILL LAST FOREVER

The Agnes Weis Society recognizes those who include United Way of Escambia County in their will or estate plans or other forms of planned gifts. The Agnes Weis Society is a division of the Leaders in Giving Society.



SOCIETY MEMBERS

Charles and Debbie Allcott
John and Eleanor Appleyard
Lewis Bear, III
John T. Bertz
Sandra Cesaretti-Ray
Pat and Sonja Crawford
Sally Bussell Fox
Dorothy Kahn Galloway
Douglas Herrick and Sharon Hess Herrick
Laura Hill
Mr. and Mrs. Skip E. Housh
Mr. and Mrs. R.K. "Skip" Hunter
Mark and Rita Icenogle
Robert H. Kahn, Jr.
Suzanne J. Kahn
Nancy Allen Kozbiel
Gary and Joeanne Leuchtman
C. Flack Logan
J. Gary Lowery
Robert and Angela Mills
Jean Norman
Randy and Ninalyn Oxenham
Jill and Grover C. Robinson, IV
Skip and Diane Vogelsang



RED FEATHER

GOLD FEATHER LEVEL **\$5,000 to \$9,999**

Vera Danly
Tammy H. Davies
Mr. and Mrs. Tom Hayes
Andrea Krieger
Jonathan Lloyd
William J. Noonan, III
Gene Rosenbaum
James O. Vick

SILVER FEATHER LEVEL **\$2,500 to \$4,999**

Marvin and Warnelle Beasley
Jack Brown
Mr. and Mrs. William Cleary
Barbara Conn
Mr. Matthew C. Durham
Mr. and Mrs. Chuck Fair
Linda and Keith Gregory
Linda Hoffman
John Isbell
Mr. and Mrs. Eric Jenson
John and Bonnie Johannemann Family
Michelle L. Kane
Joe L. Kinsey Jr.
David Lister
Margie and Alan Moore
James Myers
Cecilia C. Nanni
Kevin Robinson
Phillip Sadler and April Horne
Judge and Mrs. Roger Vinson
Mr. and Mrs. Robert Wiscombe

BRONZE FEATHER LEVEL **\$1,500 to \$2,499**

Loretta Adams
Mr. and Mrs. Lewis Bear, III
John Blackwell
Heike L. Bolton

Danny Bridges
Deborah H. Calder
Dan and Connie Cassidy
Michael Casson
John B. Clark
Mr. Daniel J. Coker
Adrienne Collins
Dr. Harry and Gayle Cramer
Daniel Davis
Michael Dorion
Michelle Dufresne
Will and Beth Dunaway
Steven and Lisa Esser
John Falduti
Ellen Fisher
John N. Floyd Jr.
David and Cherie Frederick
Thomas Gardner
Mr. and Mrs. Michael Grissett
Kimberly Haas
Joy Hamilton
Mark Haston
Tom and Celia Hilton
Chris and Janna Hull
Mr. and Mrs. Harry Kahn
Janice Rogers Kilgore
James and Rita Lay
The Leidner Family
Xia Liu
C. Flack and Kathleen Logan
Mr. and Mrs. James O. Neyman
Vaughn and Sheila Nichols
Roy and Janet Noble
Mr. and Mrs. Mort O'Sullivan
Drs. James and Nell Potter
Albert D. Rea, Jr.
Sherry Reilly
Brandon M. Rogers
Mr. and Mrs. Gary Sammons
Shardra Scott
Sue Straughn
Martha Tutchtone
Mr. and Mrs. Darren Ward
Ken and Elizabeth Woolf
Jarl T. Young

RED FEATHER LEVEL **\$1,000 to \$1,499**

Robert D. Anderson
Mr. and Mrs. Tim Anthony
Apple Corps, Inc.
Meri and Joel Asmar
Christine J. Baldwin
Herbert Ball
Virginia Barbacovey
Scott L. Barrow
Treaasa Bartley
Keith Bass
Mr. and Mrs. Edward Battaglia
Jessica H. Beal
Charles and Paige Beall
Mr. and Mrs. David Bear
Chadwick Bedwell
Mr. and Mrs. Scott Benson
Jeffery N. Bingle
Joey and Becca Boles
John and Vickie Bolyard
Chad and Cindi Bonner
Joseph & Deborah Brown
John Hiles
David M. & Kathleen M. Bounds
Tim Boyington
Maria Bray
John D. Brewer
Timothy A. Brinker
Audra Broadbent & family
Rebecca Bromley
Ronnie G. Brown
Mark T. Browning
Gretchen L. Brubaker
Mr. and Mrs. Ellis Bullock
Monica Burton
Charles R. Byars
Janet Speranzi-Cannon & Larry Cannon
Carol and Charles Carlan
Melissa Carley
Andrea Lynn Carper
James and Angela Carter
Craig and Donya Charles
Roy Childers

Robert and Michele Cleary
Tammy Clolinger
Amanda Clonts
Thea Coconino
Phillip L. Cook
Bobby B. Cordes Jr.
Gerald D. Cox
Jerrett L. Craig
Stephen Croley
Ryan Currence
Scott and Monica Dahlem
David L. Debari
Dante Dedicataria
Patrick J. Dickerson
Karl Dietrich, III
Angelene Dodson
John M. Dominey
Rodney Durost
Anne Juanita Dyson
Dennis Echols
Brandon W. Eckhoff
Matthew Ellis
Mr. and Mrs. Thomas L. Ellis
Mr. and Mrs. Patrick Emmanuel
Cathy England
Roger and Barbara Enzor
Barbara Lynn Erickson
Alin Espinosa
William Feazell
Paula Kay Ferraro
Lisa M. Fleischman
Jim R. Fletcher
David Flowers
Tracy Forstner
Ms. Margaret Fortunato
James Futch
Edward A. Gardner
Ashley and Bobby Gast
Jerome Geil
Lucinda A. Greathouse
Joseph Greene
Jennifer Grove
William and Phyllis Gureck
Lisa Hamilton
Angela Hanson

RED FEATHER FELLOWSHIP

2015-2016, the Red Feather Fellowship included **345** members who collectively gave over **\$496,159**.

Joseph and Renee Hardy
Margaret E. Harris
Carol Harrison
Bob and Sherry Hartnett
Gary and Bettie Hauver
Dr. and Mrs. Everett Havard
Jasmine M. Haynes
Mr. and Mrs. Ted Hendry
Samuel Henke
Charlotte Henke
Sharon Hensel
Jack C. Hierholzer
Janet Hodnett
Christopher C. Hood
Charles Howton
Christopher and Paula Hrbacek
Nichole Huffman
Brad and Deanna Huggins
Brandon Humphreys
Michael A. Hutcherson
Mac and Kathie Jeffcoat
Courtney Jester
Mr. and Mrs. Russell Johnson
David Jones
Julie Jones
Georgia Ketchum
Brenda Smith King
Dale R. Kirchharr
Ed Koontz
Wendy A. Kramer and Greg Barker
Megan Krist
Dietmar G. Laenger
Britt Landrum, III
Tyson W. Langham
Patrick M. Lascell
Daniel W. Lee
Kevin D. Lee
The Leidner Group of Merrill Lynch
Nancy E. Leonard
Tanya Lockett
Terrence Lockman
Sonia Lott
Shannon I. Martin
David Mathews
James Mathis

Larry C. Mathis
Michael Mattison
Josephine D. May
Wilmer McCants
Michele McCarthy
James F. McClendon
Angela E. McCorvey
Lisa and Richard McCullough
Alan McDaniel
Kimberly E. McDaniel
Chris McFarland
Frank McKiernan
Yvette and John McLellan
Robert McLendon
Donnie McMahan
Johnny McNeal
Jonathan A. McQuagge
Christopher Meier
Muriel Merritt
Mr. and Mrs. William M. Miller
Jennifer A. Miller
Amy Miller
Timothy N. Montgomery
Ed and Ginger Moore
William B. Moreland
William A. Morrison
Dennis E. Myrick
Edward Myska
Jean C. Nelson
Warren D. Norred
David Norris
Richard S. Norris
Marcia and Ed Nowlin
Catherine O'Malley
Patrick A. O'Neal
Sharhonda Owens
Kara Parker
Jessica Patterson
Christina Pendleton
Paul Phan
Eric Pickett
Sharon Pinkerton
Brannon Pitts
Mrs. Lee Pitts and Mr. Thomas Gibble
Hope Placer

David R. Player
Mr. and Mrs. Vernon Prather
Larry Pugh
Edward Ranelli
Anthony C. Reeves
Scott and Amie Remington
Jimmy and Sharee Rich
Mr. and Mrs. Jesse W. Rigby
Buzz Ritchie
Susan Ritenour
Arthur M. Roberts Sr.
Sherlena Robinson
Grover and Jill Robinson
The Rodgers Family
Andrea and Todd Rosenbaum
Jeff C. Rouillier
Richard Sanchez
Ms. Kelly F. Scharer & Dory
Mr. and Mrs. Bernard Schultz
Paule Senato
Mr. and Mrs. Thurston Shell
Charles and Mimi Sherrill
Melinda D. Shirley
Dennis V. Shoupe
Kenneth Sims
Wendell E. Smith
John W. Smith Jr.
Norman D. Smith
Dr. Mary Ellen Spears
James Wells
Gregory Stallworth
Joe & Danielle Startzel
Alexis Steele
John M. Stevens
Richard W Stone
Timothy Stronko
Thomas and Carolyn Styraneac
Don Suarez
Oliver Sumlin
Johnathan Taylor
Mr. and Mrs. John P. Tice, Jr.
John and Barbara Tria
William Trilone, Jr
Kimberly A. Vallia
Mr. and Mrs. Bruce Vredenburg

Darrell Wadsworth
Mr. Shawn P. Walker
Raymond Walker
Mr. and Mrs. Matt Wallin
Foster L. Ware, III
Ronald K. Waters
Bill and Maria Weisnicht
James Wells
Melinda S. Wells
Mr. and Mrs. Robert M. Wernicke
David W. Wheeler
Hannah Ruth White
Patrice S. Whitten
Helen Wigersma
Jonathan B. Wiggins
Amanda Wilcox
David L. Williams
Denny M. Wilson
Stewart Wright
Melanie Wroblewski
Markes Shoemaker Jr.
Ronnie and Joyce Yaden
Christofer Zajac
Hannah Zuniga

**** 20 Donors have chosen to remain anonymous**

If we have inadvertently missed your name or you would like to have your name listed differently, please accept our apology and let us know by calling 850.434.3157

DIAMOND DONORS

25 YEARS

OR MORE OF GIVING



Are you a Diamond Donor who has given to our community through United Way for 25 years or more? Please let us know so that we can recognize you in the future. Call 850-434-3157 or email info@unitedwayescambia.org.

24 donors have chosen to remain anonymous

- | | | | |
|-----------------------------|------------------------------------|------------------------------|--------------------------------|
| Tim and Kathy Anthony | Robert Gaines | Elaine Mager | Thomas Sharpe |
| Meri and Joel Asmar | William Gilleran | Michael Manley | Stephen Shaw |
| Carl Backman | Keith Gilley | Carol Martin | Paula Shell |
| Marvin and Warnelle Beasley | Sandra Greenfield | Pamela Matthews | Kenneth Sims |
| Genevieve Beck | Jill Grove | Lisa and Richard McCullough | Melanie Skaggs |
| Carol Beede | Janice Gulisao | Kandra McDavid | Craig Smith |
| MaryAnn Bickerstaff | William and Phyllis Gureck | Janice McGrew | John Smith |
| Martha Blodgett | Robert Hamel | Rex McKinney | Stanley Sneed |
| Joey and Becca Boles | Joseph and Renee Hardy | Yvette and John McLellan | Carless Stephens |
| John and Vickie Bolyard | Charles Harrell | Jennifer Miles | Richard Stone |
| Tammie Booker | Carla Harris | Timothy Montgomery | Greg Strader |
| Alan Bookman | Carol Harrison | Edward and Ginger Moore | Sue Straughn |
| Betsy Bowers | Tom and Lynn Hayes | Jeffrey Moore | Harry Stump |
| Tammy Boyd | Joseph Hecht | Jerry Moore | Don Suarez |
| Janice Brown | Derrick Hendricks | Margie and Alan Moore | Jack Teschel |
| Mark Browning | Ted Hendry | Patrice Moore | Mr. and Mrs. John P. Tice, Jr. |
| Morgan and Anne Bunch | Sharon Hensel | Janet Moreland | Jerald Travis |
| Carol and Charles Carlan | Lorese Hines | Jere Myers | John and Barbara Tria |
| Andrea Carper | Janet Holley | Dennis Myrick | Randall Tucker |
| John Carroll | James Hollinhead | Florence Nelson | Gary Turner |
| Edgar Carter | Kenny Holt | James and Margaret Neyman | Judge and Mrs. Roger Vinson |
| Dan and Connie Cassidy | Stella Hopkins | Vaughn and Sheila Nichols | Roger and Raisa Webb |
| William Champlin | Christopher and Paula Hrbacek | Roy and Janet Noble | Marian Wernicke |
| Melissa Chinn | Eric and Michelle Jenson | Mr. William J. Noonan, III | Hannah White |
| John Cichon | John & Bonnie Johannemann Family | Marcia and Ed Nowlin | Steven Whittle |
| John Clark | Deborah Johnson | Mr. and Mrs. Mort O'Sullivan | Kevin Wilbourn |
| Nancy Connelly | Sandy Johnson | Roland Oswald | Randy Wilkins |
| Lori Coppels | Danny Kepner | Julie Patton | Deborah Williams |
| Cheryl Cullison | Janice Kilgore | Kathy Phillips | Gary Williams |
| Linda Cushing | Joe Kinsey | James Polk | Sheila Williams |
| Daniel Davis | Ed Koontz | Albert and Claudia Post | Tammy Williams |
| Douglas Davis | Wendy Kramer and Greg Barker | Catherine Regan | Thomas Willnecker |
| David Debari | Britt and Nell Landrum | Doug Resmondo | Walt Winter |
| John Deem | Daniel Lee | Jimmy and Sharee Rich | Sherry Wiscombe |
| Karl Dietrich, III | The Leidner Group of Merrill Lynch | Buzz Ritchie | Michael Wisdom |
| Yvonne Drake | Joseph Leonard | Arthur Roberts | Ken and Elizabeth Woolf |
| Mr. and Mrs. Thomas Ellis | David Lister | Gene Rosenbaum | Michael Yabut |
| Cathy England | Janet Lloyd | Michael Rowan | Ronnie and Joyce Yaden |
| Sharon Flowers | C. Flack and Kathleen Logan | Rosa Sakalarios | Catherine Yates |
| Judith Floyd | Donald Long | Mr. and Mrs. Gary Sammons | Doris and Robert Young |
| Alan Foster | Mary Lowe | Barbara Sawyer | Belinda Zephir |
| Harriet Franklin | Jack Lowrey | Harry and Pam Schwartz | |

IN-KIND GIVING

In-Kind Goods to United Way totaled **\$483,462**

IN-KIND DONORS 2015-16

A & H Towing Services Inc.
Alorica
Alpha Phi Alpha Fraternity
AlSCO
Amanda Hindsman
Andrea Krieger
April Gunnell
Ashley Bodmer
Ashley Rietz
Azalea Trace
Bagelheads
Ballet Pensacola
Barbara Bailey
Beach Community Bank
Beall's Outlet
Beyond the Grape
Boneheads
Bonnie Kein
Brenden Arney
Brittney Matt
Buffalo Rock Company
Carlee Hoffmann
Carol Freeman
Carol Osborn
Carolyn Orchard
Cat Country 98.7 / WNR 1620 AM
Cathy Hendrix
Central Credit Union of Florida
Chic-Fil-A, Bayou
Chick-Fil-A, Navy Boulevard
Chonte' Colvin
City Of Pensacola
Cliff Anderson
Comfort Care and Orthodontics
Covenant Hospice, Inc
Desire Stone
Dlux Printing
Edward Adams
Elite Services

Emcare
Emerald Coast Utilities Authority
Episcopal Day School
Escambia Search and Rescue, Inc.
Ethel Haydon
Ever'man Coop Grocery
Exxon Mobil
Fortis Institute
Gay Berger
George Nabors
Goodwill Easter Seals of the Gulf Coast, Inc.
Gulf Coast Photo Booth
Gulf Power Company
Gulf Winds Federal Credit Union
Gwilym Jenkins
Harry and Pam Schwartz
Humana
Irina Kantaras
Jackson Hewitt
Jan Gunniss
Jenn Burkhart
Joel Balisteri
John and Kathy Taylor
John Gross
Josh Sittin
Joyce Cassino
Judy Budweel
Kagan Jenkins
Kimberly Cornish
Lamar Advertising
Laura Hill
Leah Hathcote
Legal Services of North Florida, Inc.
Lewis Bear Company
Lisa Pellegrino
Longhorn Steakhouse
Lowe's Superstore #438
Luxe Sleep
Lyndi Warner

Mark Hutcheon
Mary Jo Campisi
Mary Wilbur
Maximal Tours
Maximillian Coffee
Megan Moloney
Melissa Harold
Melissa Lewis
Merchant's Paper Company
Miron & Sandy Rosenthal
Moe's Cordova LLC
Naomi Kjer
Navy Federal Credit Union
Newk's Eatery
Nikkol Wymer
Northwest Florida Paralegal Association
Olive Garden
Omonleyne Orbude
Pace First United Methodist
Papa Johns Pizza
Patricia Gross
Patricia Pepper
Patrick Patch
Paula Drummond
Pensacola Bay Brewery
Pensacola Bay Center
Pensacola Blue Wahoos
Pensacola Cars and Coffee
Pensacola International Airport
Pensacola Legal Support Specialists Association
Pensacola News Journal
Pensacola State College
Penton House Salon and Spa
Planet Fitness
Plant and Flower Boutique
Portabello Market
Publix Grocery Store, Mobile Hwy #1318
Publix Grocery Store, Nine Mile Road #1343
Publix Grocery Store, Perdido Key, #1296

Ray Shane
Rebecca McLellan
Runway Chic
Ryan Butler
Sacred Heart Health System
Saenger Theater
Saltmarsh Cleaveland & Gund
Sandy Sansing Automotive Group
Savanna Penland
Scott Egstad & Company
Seville Rotary Club
Sharee Rich
Shauna Courtney
Sheila Ramsey
St. James Missionary Baptist Church
Stacy Rosenfield
Stay the Spa
Studer Group
Susan Woolf
Tabitha Skechak
Tammy Diaz
Taylor Mancy
Texas Roadhouse
Tobie McElrath
Tonia Ellwood
Tony Eberhardt
Trinity Lutheran Church
Two Men and a Truck
Underwood Anderson and Associates
University of West Florida
Veranda Retirement Community
Wal-mart Foundation
Wal-mart, Creighton Road
Wal-mart, Highway 29
Wal-mart, Mobile Highway
WEAR-TV Channel 3
Whataburger Inc
Windcreek Hospitality

25 Organizations Received In-Kind Goods from United Way in 2015-16

Alfred Washburn Center
AWFUMC Florida Recovery Team
Be Ready Alliance Coordinating for Emergencies
Capstone Adaptive Learning & Therapy Centers
Catholic Charities
Cokesbury United Methodist Church
Community Drug and Alcohol Council

Council on Aging of West Florida
Every Child A Reader in Escambia
Escambia County Health Start Coalition
Goodwill Easter Seals
Gulf Coast Kid's House
Legal Services of North Florida
Manna Food Pantries

Northwest Florida Community Outreach
Pace Center for Girls
Safe Harbor Women's Center
Samaritan Hands
St. Vincent de Paul
Soles for Souls
Suite Yourself

Town of Century
United Methodist Committee of Relief
United Ministries
Community Drug and Alcohol Council

UNITED WAY OF ESCAMBIA COUNTY
**SMALL BUSINESS
CIRCLE**



Small businesses are challenged with many requests to support a variety of important causes. Philanthropy is made easy for Small Business Circle (SBC) Members who donate \$100 a month (\$1,200/year) to United Way of Escambia.

**SPECIAL THANKS TO OUR
CHARTER SBC MEMBER!**



THANK YOU V

ACHIEVE ESCAMBIA

David Alexander
Brian Baumgardner
Lewis Bear Jr.
Judy Bense
Doug Brown
Jack Brown
Debbie Calder
Carol Carlan
Shivan Chyz
Stan Connally
Bill Dagnall
Susan Davis
Nicole Dixon
Kerry Eaton
Mark Faulkner
Janice Gilley
Scott Ginnetti
Thomas Greek
Jennifer Grove
Randy Hammer
Donna Harper
Rick Harper
Patti Hightower
Wes Hudes
Shawn Hutcherson
Clay Ingram
Kristie Kelley
Cliff Krut
Julian MacQueen
Kim MacQueen
Steve Marcario
Chris Martin
Trip Maygarden
Jennifer McFarren
Ed Meadows
Deb Moore
Shannon Nickenson
Peter Nowak
Marcia Nowlin
David Peaden
Bill Pearson
Randy Ramos
Dick Rizzo
Jeff Rogers
Shawn Salamida
Michelle Salzman
Eladies Sampson
Sandy Sansing
Martha Saunders
Michelle Scaglione
Quint Studer
Jibril Sulaiman
Johnathan Taylor

Malcolm Thomas
Bruce Vredenburg
Bruce Watson
Lonnie Wesley
Robin Wright
CRAM THE VAN
Monique Addison
Deborah Allen
Sandra Anderson
Jeremy Arnett
Adonna Bridges
Alex Chatman
Hector Chen
Theresa Chmiel
U.S. Marine Corps
Emma Crews
Melinda Crews
Mattie Davis
Jonathan Diamond
Meghan Emmons
Antonia Forney
Joe Green
Brandon Howard
Belinda Kerr
Joseph Radich
Jaila Roberts
Shawn Roberts
Matthew Rodgers
Sandy Sansing
Mary Beth Stillwell
Sarah Sutton
Danny Warner
Rebecca Whitescarver
AmeriCorps ACES
Central Credit Union
Central Pensacola Kiwanis
Children's Home Society
Navy Federal
New Beginnings
PACE Center for Girls
Papa Johns
Pensacola Young Professionals
Publix
WEAR Channel 3 TV and WFGX
COMMUNITY INVESTMENT
Brett Bennett
MaryAnn Bickerstaff
Detriz Bowers
Jon Busen
Patrick Carlson
Wayne Chisenhall
Adam Clause
Jamie Cochran
Karen Columbus

Maggie Conaghan
Tammy Davies
Michelle Dufresne
Trice Dukes
Cedric Durre
Donna Edwards
Toby Edwards
Chuck Fair
Jason Flory
John Floyd
William Freeman
KC Gartman
Angie Hanson
Scarlett Henson
Kay Hill
Amanda Hindsman
Kenny Holt
Mike Horgan
Wes Hudgens
Kelly Jasen
Sonja Johnson
Jason Jones
Terry Joseph
Michelle Kane
Michele Kors
Stacey Kostevicki
James Lay
Maegan Leonard
Jack Lowrey
Teresa Loy
Lauren Mabrie
Lisa McCullough
Amy Miller
Kristi Mitchell
Christina Moehrke
Deb Moore
Brock Neighbors
Molly Nowlan
Nicole Partridge
Bobby Phillips
Gerald Ramsey
Jennifer Reeves
Jeff Rouillier
Allison Smith
Darin Southard
Susan Southard
Donna Gail Spencer
Rebecca Stauffa-cher
Lynsey Stuart
Randy Thompson
Dean Turner
Barbara White
DAY OF CARING
Robert Abramowski

Mitch Ashford
Vincent Ashley
Sherry Babcock
Barbara Bailey
Christine Baker
Carolyn Barbour
Allison Beaty
Paula Behrens
Susan Berriam
MaryAnn Bickerstaff
James Blackwell
Abigail Bradley
Julia Brady
Scott Bray
Allison Brice
Sherry Brock
Susan Byram
Bryan Camacho
Laura Carroll
Gigi Cassidy
Connie Cassidy
Gladys Castle
Danny Chase
Larry Cherry
Denise Choron
Carmen Ciardello
Janine Clakley
Paula Clark
Rebecca Cleary
Jamie Cochran
Terry Colburn
Brandi Cole
Jennifer Collins
Lila Cox
Shelly Cox
Erin Cramer
Melissa Cruise
Victoria D'Angelo
Mark Davidson
Stacey Davis
Rebecca DeMuth
Jonathan Diamond
Jenny Diebold
Susan Dorman
Donna Doup
Meredith Doyen
Michelle Driskell
Jacob Felling
Pam Frick
Ayhana Gaines
Kelsey Gallo
Anita Gantt
Sharon George
Frank Giammaria

Harolyn Gobert
Jason Grills
AACI Diana Guess
Amanda Handrahan
Samantha Hill
Ethan Hoffman
Stevie Hoven
JoAnn Howansky
Rob Hughes
Joni Humphreys
Krispy Hutto
Ed Ingalls
Tina Isaacson
Melanie Jacobi
Catherine Johns
Cam Johnson
Tammara Johnson
Jessica Johnson
Doug Johnson
Jason Jones
Latasha Jones
Jennifer Kennedy
Kimberly Kirchharr
Andrea Kvevh
Stacey Ladner
Tim Land
Shannon Lands
Kerry Langley
Nicholas Laubach
Nathan Lee
Rosilyn Lee
Keelea LeJeune
Wanda Lett
HM2 Camille Lewis
Sydney Lewis
Melissa Lewis
Michael Listau
Jen Long
Carol Lyons
Patricia Madison
Blake Majzun
Audrey Martin
Allison McBryde
Robin McCoy
Richard McLeod
Betty McLeroy
Marinda Mendez
Chris Moehrke
Micheal Morgan
Ashleigh Moss
Ariana Murray
Caitlin Newby
Nicole Owens-Braggs
Marisa Ann Palumbo

VOLUNTEERS!

3,637 VOLUNTEERS GAVE 41,738 HOURS FOR A TOTAL IMPACT OF \$962,884!

Eric Pickett
Gerry Pippins
Tara Potter
Debby Prather
Barbara Quarells
Teresa Ramsey
Doris Rawls
Tish Reyes
Ashley Roache
Dani Roberts
Topeka Robinson
Timothy Rose
Amy Sarosdy
Zachary Schang
Kelly Scharer
Crystal Scott
Paula Shell
Alicia Shoulta
Maggie Smethers
Gary Southworth
Janet Speranzi-Cannon
Josh Steen
Cindy Stephens
James Stinson
DeeAnna Stoll
Carol Thomas
Charles Thomas
Derrick Thomas
Briana Thompson
Melissa Thompson
Sunday Tindell
Bianca Torres
Terri Trivett
David Valletto
Barbie Valletto
Stephanie Walker
Margaret Warr
Juanda White
Brenda Wilson
Todd Winter
Amy Workman
Linda Wright
Melanie Wroblewski
Jasmin Wyer
Annette Zeeb

OTHER VOLUNTEERS

Krystle Aman
Kaye Barker
New Beginnings
Aaron Bocz
Sheilah Bowman
Chet Brand
John Burke
Karilyn Butler

Chad Cage
Lauren Cleary
Rebecca Cleary
Jabril Clemons
Rayesha Cokes
Latoya Collins-Booker
Rebecca Cook
Kelly Cooke
Rachael Cox
Vickie Cumbie
Lydia Daniels
Octavia Davis
Jill Drake
DJ Echols
Gloria Eligio
Dena Faessel
Ashley Faulkner
AJ Gamble
Doug Gardner
Amanda Gerow
Damaris Gonzalez
Kathleen Graydon
Robert Graydon
Laura Green
Ben Hardy
Joe Hardy
Sara Harlow
Teri Harris
Tori Harris
Alexandria Harrison
Laura Hatton
Roberta Hawkins
Bonnie Johannemann
John Johannemann
Jason Jones
Angel Kindt
Monika Kochanova
Lori Kress
Austin Langfeldt
Amy Lawson
Jessica Lee
Maegan Leonard
Jill L'Orange
Addison Macaluso
Kelly MacLeod
Laura Maischaider
Avalon Mallory
Darline McDole
Karen McLendon
Joseph McNair
Kristin Milliyon
Cindy Minor
Brittany Nebel
Nhuy Ngo

Jean Norman
Clint Retherford
Alecia Riehle
Cara Rinelli
Jim Roberts
Mike Robinson
Jared Rorrer
Natasha Rosando
Alicia Shoulta
Pam Smith
Tamula Smith
James Stinson
Julie Stratton
Tom Styrane
Jaterra Thomas
Briana Thompson
Maebel Tinoko
Christina Todd
Dolph Todd
Timothy Trinks
Dykeria Turner
Nicholas Weber
Steven White
Austin Wigington
Alicia Wilson
Brenda Woolum
Pathways for Change
Children's Home Society
Volunteers of America
READING PALS
Mitch Adcox
Noreen Albrecht
Yusuf Ali
Niasia Allen
Monica Allen
Mary Anderson
Sally Andress
Jherriaun Armstead
Marigrace Bailey
Laurie Bailey
Gary Barnes
Jeanne Barnes
Catherine Barnett
Brooke Baron
Sarah Bastaki
Graciela (Grace) Bedford
Kelly Bednarz
Jodi Bell
Sheryl Bennett
Sandra Bennett
Anita Blackmon
Ashley Bodmer
Jazmin Boles
Jackie Boudreaux

Amy Bowman
Julia Brady
Mike Brady
Susan Brak
Chelsea Bramblett
Carole Brandenburg
Alan Brooks
Annie Brown
Jo'Nique Bruster
Charles Buchanan
Joanne Bush
Janet Buskirk
Suzanne Byfield
Lavares Calhoun
Kristyn Campbell
Tara Cannon
Tatalia Carmichael
Andrea Castillo
Sandra Chancellor
Charlotte Cheney
Ashley Christie
Chris Cochran
Andrew Coleman
Kelly Cooke
Kyle Coon
Rachael Cox
Cathy Cox
Stephanie Crandall
Tammy Cristofoletti
Barbara Cronemeyer
Susan Davis
Kathy Decker
Tammy Diaz
Justin Donato
Raelynn Dover
Sharon Duplantis
Wendy Eacret
Anthony Eberhardt
Sandy Edwards
Cheri Eichen
John Ellis
Cody Elmer
Brenda Faison
Jane Farmer
Caroline Farrugia
Janet Feallock
MaryAnn Federovich
Carolyn Finch
Robert Fisher
Carolyn Formsma
Mary Fox
Dylan Frizzelle
Cheryl Galavitz
Frank Giammaria

Sue Ellen Goodwin
Emily Green
Sarah Green
Joe Green
Jeanne Griffin
Beverly Griffith
Jennifer Grove
Martha Gund
Richard Hahner
Diane Hahner
Nena Haigler
Bryan Hancock
Kandall Hardin
Clay Harrington
Ray Heidenheim
Kylie Henderson
Cathy Hendrix
Terry Herr
Laura Hill
Carlee Hoffmann
Mary Anne Holland
Ann Housh
Kristen Howard
Cindy Howard
Keyontay Humphries
Crysal Hux
Judith Ishee-Patton
Susan Jacobs
Ericka Janssen
Kagan Jenkins
Sharon Jobe
Kandee Johnson
Sharon Johs
Melissa Jones
Marilyn Jones
Dina Justice
Charles Kahn
Irina Kantaras
Julie Kaple
Lindsay Kelly
Edith Kirk
Ashlee Kirkland
Lori Kizziah
Naomi Kjer
Tammy Koontz
Kerrin Kostevick
Stacey Kostevick
Rosemary Kruse-Hefti
Marjorie (Jane) Lake
Britt Landrum
Nell Landrum
Rita Lay
Jennie Legge
Nancy Lehman

THANK YOU V

Willa Licata
James Longsworth
Nicole Louie
Jack Lowrey
Kelly MacLeod
Teena Manley
Linda Martel
Audrey Martin-Washington
Jo Mathews
Patricia Maxwell
Jora Maxwell
Charlene May
Jo McArthur
Jacqueline McConnico
Allison McCrory
Kim McDaniel
Brandon McFarren
Susan McKinnon
Yvette McLellan
Gloria McMillan
Meghan (Nikkie) Medici
Leigh Mitchell
Christina Moehrke
Paula Montgomery
Deb Moore
Elizabeth (Betsy) Moraski
Margaret Murphy
Stephanie Mutz
Caitlin Newby
Han Nguyen
Jean Norman
Steve Northup
George Norton
Sue Odenbrett
Colleen Ortiz
Cat Outzen
Linda Oyler
Radha Patel
Darcy Patrick
Beverly Patteson
Shelia Payne
Esther Pearson
Darla Permenter
Carolyn (Carrie) Petracca
Amy Peyton
Meke Posey
Gregory Pound
Khadijah Preaster
Fredrica (Freddie) Prettyman
Shelia Ramsey
Asia Rancifer
Sharon Ray
Louis Ray, Jr

Joanne Reece
Andrew Rhodes
Sharee Rich
Lauren Robinson
Claire Rochefort
Jeanne Royal
Keiona Rudolph
Trisha Sanders
Alphia Sauer
Karen Savage
Barbara Sawyer
Diane Scharfenstine
Carolyn Schuster-Smith
Jenny Shung
Joanne Shung
Kathie Simpson
Lauren Smith
Martha Smith
Sandra Smith
Vickie Smithee
Susan Southard
Patricia Southerland
Elizabeth St.Clair
Kathy St.Ores
Samuel St.Ores
Sarah St.Ores
Rebecca Stauffacher
Tracy Steiner
Michael Steltenkamp
Caroline Stickel
Beverly Stokes
James Stohlanske
Don Suarez
Fran Switzer
Russell Szafran
Mollie Taylor
Seletta Teston
Pamela Thompson
Julie Tippins Parker
Jennifer Todd
Agnes Tolbert
Ann Tucei
Theresa Tucker
Kiah Turner
Cathy Van Blaricom
Vanessa Vasquez
Jessica Veasley
Avery Vinson
Frankie Walker
Walter Wallace
Robert Warren
Cyndi Warren
Wendy Wesolowski

Lauren Westwood
Grace Whalen
Shareef White
Natasha Williams
Alexus Wilson
Laurie Winterberg
Will Wirth
Tracy Wise
Christian Woods
Amy Workman
Jasmin Wyer
David Zimmerman
George Ziolkowski
[RSVP](#)
Jeffery Abram
Alice Ashcraft
Catherine Barnett
Graciela Bedford
William Bedford
Mary Benesch
Michael Benesch
Barbara Bess
Nancy Blanford
Charles Bone
Nancy Bowman
James Brown
Priscilla Brown
Kim Brungraber
Karilyn Butler
Connie Carreker
Sandra Carswell
Debra Casper
Charlotte Cheney
Bill Cleary
Christy Cochran
Judy Coe
Terry Cole
Manuel Costa
Alfred Davey
Margaret Davey
Angela Deane
Audrie Denson
Carol DeWeese
Ella Dowdy
Lawrence Draeger
Mark Dreadin
Gloria Emmons
Caroline Farrugia
Maryann Federovich
Ralph Fenn Jr.
Carolyn Finch
Jennifer Fleming
Johanne Fleming

Kenny Folsom
Jerry Fritz
Hal George
Peggy Gibbs
Sherry Ginn
Emily Green
Beverly Griffith
Richard Hahner
Nena Haigler
Jan Harnish
Donna Henderson
Delbert Jackson
Romeo Javier
Norma Johnson
Sharon Johs
Murriel Jones
Patricia Kahn
Ray Kinne
Rosemary Kruse-Hefti
Robert Kugelman
Allyson Kuhn
Vivian Lamont
Victor Latham
Blair Laughlin
Alma Lett
Willa Licata
James Longsworth
Sue Loveless
Rita Manley
Aubrey Martin-Washington
Henry McAway
Susan McKinnon
Fe Meyer
Sherrie Mitchell
Paula Montgomery
George Nabors
Tom Nabors
Karen Nightengale
Ken Overholt
Darcy Patrick
Esther Pearson
Patricia Pepper
Jamie Peterson
Bobby Phillips
Mary Lou Platt
Irma Posey
Judith Powers
Fredrica Prettyman
Robert Profit
Madeleine Radensky
Lou Ray
Cara Rinelli
Wilmet Rypkema

Kathie Simpson
Maggie Smethers
Charles Smith
Irene Smith
Kathy Smith
Martha Smith
Pam Smith
Delores Steel
Ann Stephens
Greg Strader
Russell Szafran
Seletta Teston
Julie Tippins-Parker
Carolynn Turk
Kenneth Turk
Terri Wade
Edward Walker
Walter Wallace
Mable Wells
Harriette Williams
Laurie Winterberg
Daphe Wortendyke
Ronald Wright
Theresa Zahn
[WORKPLACE COORDINATORS](#)
Robert Abramowski
Christina Acosta
Johanna Allard
Meri Asmar
Mina Atzell
Dwight Babcock
Stephanie Baker
Christine Baker
Cilia Barrett
Nancy Bass
Patrice Beasley
Janet Beech
Jenny Beecher
Carol Beede
Paula Behrens
June Bell
Vivian Benson
Belinda Benson
Susan Berrian
Veronica Blakes
Michael Blue
Ashley Bodmer
Lilly Bohorques
Becca Boles
Audrey Booth
Crystal Bordonon
Janice Bozant
John Brewer

VOLUNTEERS!

3,637 VOLUNTEERS GAVE 41,738 HOURS FOR A TOTAL IMPACT OF \$962,884!

Becky Bromley
James Brooks
Leslie Brosofsky
Natalie Brou
Allison Brown
Gina Burke
Tori Burkett
Elizabeth Buswell
Amanda Byers
Tammy Cantrell
Sheri Carlton
Gladys Castle
Megan Chapman
Becca Cleary
Jamie Cochran
Judith Colburn
Brandi Cole
Harriet Coleman
Susan Cotton
Angie Cotton
Candy Covalleski
Lila Cox
Jeff Creel
Melissa Cruise
Cheryl Cullison
Monya Curtis
Cindy Davison
Cindy De La Cruz
Jennifer Dean
Rebecca Dmuth
Marci Doerfler
Michael Doize
Sgt. Jimmy Donohoe
Susan Dorman
Chris Dowd
Kathy Dunagan
Mickie Dunbar
Kimberly Durant
Jackie Dwelle
Debra Early
Regina Eldridge
Patrick Elebash
Tonya Ellis
Beth Enbody
Karen Epstein
Carolee Evans
Mary Fair
John Falduti
Jessica Faulk
Ashley Faulkner
Cindy Fell
Jacob Felling
Darlene Floyd

Susi Franklin
Margaret Frasier
Pam Frick
Sonja Gains
Lydia Gaudet
Brandi Gentry
Kathleen Getchell
Nancy Gindl-Perry
Nancy Glass
Sherry Glover
Vicki Godwin
Maria Gomes
Hosea Goodwyn
Tracy Gully
Carmen Gustafson
Sheila Hall
Grier Halstead
Charity Hamilton
Amanda Handrahan
Kim Hange
Marion Harper
Shawn Harris
Dana Harris
Valerie Hassell
Karen Hatcher
Rita Hawthorne
Rebecca Healer
Adrienne Heart
Leesa Hill
Ethan Hoffman
Molly Holmes
Dawn Holokan
Kenny Holt
Heather Horne
JoAnn Howansky
Debbie Humphrey
Jono Humphreys
Leslie Hunter-Huff
Lisa Jacobs
Gary James
Linda Jansky
Kelly Jasen
Kagan Jenkins
Scott Jillson
Deborah Johnson
Jamie Johnson
Heather Julin-Pittman
Angie Karalekas
Christine Kelly
Jennifer Kennedy
Kim Kircharr
Byron Knowlton
Lori Kress

Michelle Kucinski
Natalie Lackey
Stacy Ladner
Kerry Langley
Lindsay Lee
Debora Lefort-Cintrone
Shelli Lemberger
Melinda Leverett
Gary Lincoln
Andreze Mangum
Barbara Maresca
Dave Matthews
Mimi Matthews
Melissa Matthews
Wanda McAllister
Elizabeth McCarver
Sally McConnell
Phyllis McDurmont
Mary McGregor
Michelle McKee
Jamie McLaughlin
Rebecca McLellan
Matt McMillan
Sandy Midlam
Susie Miles
Jennifer Miles
Steve Mitchell
Marquita Moorers-Murrow
Reba Morrell
Brenda Nall
Kevin Nelson
Terri Noell
Candice Norwood
Trudy O'Brien
Jamie Peadar
Brianna Perciballi
Victoria Perkins
Lynsey Perry
Mary Pettway
Paul Phan
Vonda Phetteplace
Dolly Pittman
Deborah Platt
DeAnna Poland-Stemock
Gloria Quesada
Addie Quina
Viktoria Radkova-Esteva
Kiesha Randerson
Raven Ransom
Melissa Rawson
Jessica Reeder
Tyrone Reese
Kathy Rich

Meredith Roberts
Charlie Robinson
Kevin Robinson
Ronnetha Ryals
Leslie Saam
Angela Sampieri
Kelly Scharer
Janelle Schroeder
Julie Schweitzer
Paula Shell
Tasheba Sheppard
Audrey Sherburne
Jennifer Simon
Kay Singleton
Jacquelyn Smith
Cheryl Smith
Regina Smolensky
Kathy Spellman
Elisa Spencer
Janet Speranzi-Cannon
Robin Stephens
Cindy Stephens
Lynsey Stuart
Vicki Suarez
Connie Sutton
Ann Swanson
Brittany Swinford
Daniel Tarnock
Kirby Thomas
Kimberly Thomas
Karen Thompson
Randy Thompson
Mary Tucker
Christine Viator
Julie Walker
Phyllis Walker
Audrey Washington
Jessica Watson
Susie Watson
Cathy Watts
Lori Weedo
Jeff Weeks
George Ann White
Eva Williams
Mary Wilson
Grayson Wood
Melanie Wroblewski
Mark Yellen
VITA
Jeff Abram
Tatiana Apostol
Mary Bakhoun
Sarah Bakhoun

Colin Beard
Bill Bedford
Graciela Bedford
Ed Blanc
Nancy Blanford
Charles Bone
Sharonda Boston
Daniel Bowen
Roxanne Cameron
Alonna Chastang
Alec Clark
Tylean Coleman
Manny Costa
Rich Davis
Andrew Dunlap
Sheila Fallon
Michael Fischer
Jerome Fritz
Rosalyn Garnick
Terry Gathman
Maralee Geil
Hanna Gralton
Holly Gray
Charles Hardenburg
Sam Hippely
John Huddleston
Laura Knisbell
Jacki Knudsen
Victor Latham
Deidre Laurel
Kevin Murphy
Tin Nguyen
Vicky Nguyen
Jaclyn Pienkowski
Natalie Russel
Steven Salmela
Jose Santos
Sidney Sharp
Dao Shu Wei
Marie Strevey
Raymond Sullivan
Nancy Taylor
Allison Tyler
Michael Urbanski
Tim Wenger
Laureen Wicker
Tempestt Williams
Eddie Young

If we have inadvertently missed your name or you would like to have your name listed differently, please accept our apology and let us know by calling 850.434.3157

STEP 1. PROVIDE YOUR PERSONAL INFORMATION (list your name as you would like to be recognized).

MR/MRS/MS/DR FIRST NAME MI LAST NAME

COMPANY NAME

HOME ADDRESS (For credit card donations, address listed must be your billing address.) CITY

STATE ZIP HOME PHONE

Want to see how your contribution is making a difference? Please provide your preferred email address so we can share how your contribution is making a difference and provide you opportunities to give, advocate and volunteer all year long.

PREFERRED EMAIL ADDRESS _____

STEP 2. SELECT PAYROLL DEDUCTION, CREDIT CARD, OR A ONE-TIME DONATION.

<p><input type="checkbox"/> PAYROLL DEDUCTION I want to contribute the following amount each pay period:</p> <p><input type="text"/> X <input type="text"/> = <input type="text"/></p> <p>\$ amount # pay periods Total Annual Pledge</p> <p><input type="checkbox"/> Yes, I would like to be a CONTINUOUS GIVER and assure that my pledge will be automatically initiated year after year.</p>	<p><input type="checkbox"/> CREDIT CARD</p> <p><input type="checkbox"/> One Time</p> <p><input type="checkbox"/> Monthly</p> <p><input type="checkbox"/> Quarterly</p> <p><input type="text"/> X <input type="text"/> = <input type="text"/></p> <p>pledge amount Total Annual Pledge</p> <p>Start date _____</p> <p>Exp _____ / _____ CVV (3 digits on the back) _____</p> <p>CC # _____</p>	<p><input type="checkbox"/> ONE-TIME DONATION</p> <p><input type="checkbox"/> Personal check (enclosed)</p> <p><input type="checkbox"/> Cash</p> <p><input type="text"/></p> <p>Total Pledge</p>
---	--	---

STEP 3. MY PLEDGE QUALIFIES ME FOR (check all that apply).

<p><input type="checkbox"/> LEADERSHIP GIFT I donated a minimum of \$1,000 or more and want to be recognized as a <i>Red Feather Leader</i>. Combine my Leadership Gift With: _____ Workplace: _____ <input type="checkbox"/> I prefer to remain anonymous.</p>	<p><input type="checkbox"/> EMERGING LEADERS SOCIETY I donated \$365 or more, am between the ages of 21-40 and want to be recognized as an Emerging Leader.</p> <p><input type="checkbox"/> DIAMOND DONOR I have donated for 25 years or more to United Way and want to be recognized as a Diamond Donor.</p> <p><input type="checkbox"/> WOMEN'S LEADERSHIP COUNCIL I have donated a minimum of \$1000. Or, I have donated \$500 in addition to volunteering 25 hours as a ReadingPal and would like to join the Women's Leadership Council.</p>
--	---

MY DONATION GIVES ME

ONE ENTRY = \$130

TWO ENTRIES = \$520

OR

THREE ENTRIES = \$1040

INTO THE 2017 KIA SOUL GIVEAWAY.

STEP 4. CHOOSE HOW YOU WANT TO INVEST IN YOUR COMMUNITY.

option A

GIVE THE UNITED WAY AND INFLUENCE THE CONDITION OF ALL. This is a powerful way to invest in your community because your donation achieves focused impact through partnerships with local nonprofits who leverage, measure and report on how your gift creates real, lasting change in Escambia County.

Do you want to direct your donation to one of our three focus areas?

Education: Improve school readiness.

Financial Stability: Provide opportunities to move citizens past the cycle of poverty.

Health: Increase Ability for citizens to live healthy, independent lives.

option B

GIVE TO THE AGENCY OF MY CHOICE:
(We do not certify these agencies or guarantee the effectiveness of how they use your funds. Write in your agency of choice.)

AGENCY NAME AND ADDRESS	AGENCY NAME AND ADDRESS
-------------------------	-------------------------

option C

SPLIT MY CONTRIBUTION BETWEEN UNITED WAY OF ESCAMBIA COUNTY AND MY AGENCY OF CHOICE:
% _____ of total gift donated the *united way* % _____ of total gift donated to Agency of Choice

STEP 5. PLEASE SIGN YOUR NAME

Signature _____ Date _____

THANK YOU!!

Thank you for your contribution through the United Way campaign. No goods or services were provided in exchange for this contribution. Please keep a copy of this form for your tax records. You will also need a copy of your pay stub, W-2 or other employer document showing the amount withheld and paid to a charitable organization. Consult your tax advisor for more information.

SPONSORS

THESE PARTNERS PROVIDE KEY SUPPORT TO ALL UNITED WAY EVENTS AND INITIATIVES

DIAMOND DONOR LEVEL:



EVENT & PROGRAM SPONSORS

2-1-1 NWFL

City of Pensacola
Escambia County
Escambia County Sherriff's Department
FamilyWize
Florida Department of Agriculture
Florida Department of Health
Help Me Grow
Publix Charities
Sacred Heart Health System
United Way of NWFL

2015 CAMPAIGN KICKOFF

Gulf Coast Photobooth
Plant and Flower Boutique
Pensacola Bay Center

ANNUAL CAMPAIGN

Pensacola's Kia AutoSport

CAMPAIGN AND COMMUNITY INVESTMENT FINALE

ALSCO
Beyond The Grape
Buffalo Rock Pepsi
Lewis Bear Company

COMMUNITY INVESTMENT

Florida Blue
Gulf Power Company
Publix Super Markets
Regions Bank
Sacred Heart Health System
Wells Fargo

CRAM THE VAN

American Legion
AppRiver
Cat Country 98.7/ NewsRadio 1620
Cumulus Media
EmCare
Escambia County Public Schools Foundation
Fortis Institute
International Paper
Kiwanis Club
Massey Services
Papa John's Pizza
Pensacola International Airport
Sandy Sansing Dealerships
WEAR ABC-3/WFGX My 35

DAY OF CARING

Cox Communications
Florida Blue
Wind Creek Hospitality

EDUCATION SUMMIT

Sacred Heart Hospital
Walmart

LOANED EXECUTIVE PROGRAM

Gulf Winds Credit Union
Publix Super Markets
Regions Bank

NON-PROFIT TRAINING

Publix Super Markets
Regions Bank
Sacred Heart Health System
Wells Fargo

RED FEATHER FELLOWSHIP

West Florida Hospital
Hancock Bank Club
Gulf Power Company
IDGroup
Home Builders Association of West Florida
ServisFirst Bank

RSVP

Corporation for National and Community Service

ReadingPals

Carol and Barney Barnett
The Children's Movement of Florida
The Switzer Brothers Charitable Foundation

VITA/MFT

Hancock Bank
International Revenue Service
Pensacola State College
Regions Bank
United Way Worldwide
Wells Fargo



GIVE. ADVOCATE. VOLUNTEER.
LIVE UNITED

CH746

United Way of Escambia County
1301 W. Government St. - Pensacola, FL 32502
Phone: 850.434.3157 Fax:850.444.7117